

## Product Information

---

**kit contains |**

rabbit polyclonal antibody to RbcL [AS03 037](#),  
quantity | 100 µl

Rubisco (RbcL) recombinant protein standard [AS01 017S](#), quantity | 250 µl

Agrisera PEB extraction buffer [AS08 300](#), quantity |  
3x 2 ml (4x stock)

**background** | the rubisco quantitation kit is suitable for quantitation of Rubisco in plant and algal samples using quantitative immunoblotting. The kit contains anti-RbcL antibody, recombinant RbcL protein and the Agrisera PEB buffer for quantitative protein extraction.

**reference** | to be added when available

**storage instructions | RbcL antibody and protein standard**

lyophilized/reconstituted at -20°C (6 months) or -80°C (long term storage/years). Please, avoid freezing and thawing of reconstituted antibodies. Make aliquots instead.

**storage instructions | PEB extraction buffer**

stable at RT for at least 1 month; short term storage (month) at 4°C or long term storage (1 year) at -20°C.

## Application Information

---

**RbcL antibody | AS03 037**

**western blot** | 1: 5000 – 10 000 with standard ECL

**expected / apparent MW [kDa]** | 52.7 kDa (*Arabidopsis thaliana*), 52.5 kDa (cyanobacteria), 52.3 (*Chlamydomonas reinhardtii*)

**confirmed reactivity** | *Arabidopsis thaliana*, *Chlamydomonas reinhardtii*, *Cyanophora paradoxa*, *Emiliana huxleyi*, *Euglena gracilis*, *Gonyaulax polyedra*, *Heterosigma akashiwo*, *Micromonas pusilla*, *Porphyra sp.* *Spinacia oleracea*, *Synechococcus PCC 7942*, *Thalassiosira pseudonana*

**predicted reactivity** | di and monocots, conifers, mosses, liverworts, welwitschia, green algae, red algae, brown algae, cryptomonad, cyanobacteria including prochlorophytes, gamma-proteobacteria, beta-proteobacteria, alpha proteobacteria

**not reactive in** | no confirmed exceptions from predicted reactivity known in the moment

**RbcL protein standard | AS01 017S**

at 0.15 pmoles/µl, amount enough for generation of standard curve in 85 assays (standard curve: 0.0625 pmoles, 0.125 pmoles, 0.25 pmoles)

**PEB extraction buffer | AS08 300**

amount enough for 48 isolations of plant material (using 500 µl 1x PEB for 100 mg fresh weight) or 120 isolations of algal material (using 200 µl 1x PEB for cell amounts corresponding to 4-10 µg total chlorophyll)

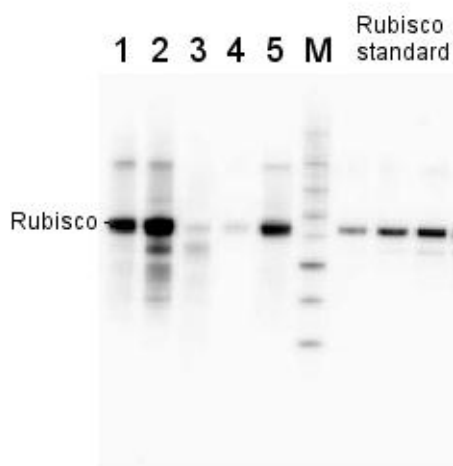
---

Antibodies are intended for research use only and not for diagnostic or therapeutic use. For applications or usage on species others than stated above, please contact [support@agrisera.com](mailto:support@agrisera.com)

---

## application example

**2 µg of total protein** from various plant extracts (1-5) extracted with PEB ([AS08 300](#)) separated on **4-12% NuPage** (Invitrogen) **LDS-PAGE** and blotted 1h to **PVDF**. Markers MagicMarks (Invitrogen) (**M**) and Rubisco protein standard at **0.0625 pmol, 0.125 pmol, 0.25 pmol**. Following standard western blot procedure this image has been obtained using a CCD imager (FluorSMax, Bio-Rad) and Quantity One software (Bio-Rad). The contour tool of the software is used to select the area for quantitation and the values are background subtracted to give an adjusted volume in counts for each standard and sample.



---

Antibodies are intended for research use only and not for diagnostic or therapeutic use. For applications or usage on species others than stated above, please contact [support@agrisera.com](mailto:support@agrisera.com)

---