

Product no **AS08 328****Anti-Abeta (1-42) | Amyloid-beta peptide 1-42****Product information**

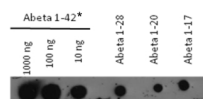
<b>Immunogen</b>	Synthetic peptide chosen from human Abeta (1-42) protein. Amino acid sequence: D-A-E-F-R-H-D-S-G-Y-E-V-H-H-Q-K-L-V-F-F-A-E-D-V-G-S-N-K-G-A-I-I-G-L-M-V-G-G-V-V-I-A
<b>Host</b>	Rabbit
<b>Clonality</b>	Polyclonal
<b>Purity</b>	Serum
<b>Format</b>	Lyophilized
<b>Quantity</b>	100 µl
<b>Reconstitution</b>	For reconstitution add 100 µl of sterile water
<b>Storage</b>	Store lyophilized/reconstituted at -20°C; once reconstituted make aliquots to avoid repeated freeze-thaw cycles. Please remember to spin the tubes briefly prior to opening them to avoid any losses that might occur from material adhering to the cap or sides of the tube.

**Application information**

<b>Recommended dilution</b>	1 : 1000 (DB), 1 : 3000 (ELISA), 1-2 µl/ml (IL)
<b>Expected   apparent MW</b>	4.5 kDa
<b>Confirmed reactivity</b>	Human
<b>Predicted reactivity</b>	Bovine, Chicken, Dog, Porcine, Rabbit
<b>Not reactive in</b>	No confirmed exceptions from predicted reactivity are currently known
<b>Additional information</b>	The antibody can detect Abeta (1-42), Abeta (1-28) Abeta (1-20) and Abeta (1-17), This product exhibits a low reactivity to monomeric Abeta (1-42) as determined by SDS-PAGE and Western blotting. Immunolocalization: human tissue was paraffin-embedded and sectioned, De-waxed and rehydrated in an ethanol gradient, Antigens were retrieved in sodium citrate buffer (pH 6) at 95°C for 1 h, The tissue sections were separately incubated for 1 h at RT with primary antibody and antibody binding was visualized with IgG Peroxidase Reagent Kit
<b>Selected references</b>	<a href="#">Lindhagen-Persson et al. (2010)</a> . Amyloid- oligomer specificity mediated by the IgM isotype--implications for a specific protective mechanism exerted by endogenous auto-antibodies. PLoS One. 2010 Nov 10;5(11):e13928. doi: 10.1371/journal.pone.0013928.

**Dot blot experiment**

- Membrane: Nitrocellulose
- Blocking buffer: 5% dry milk in PBS, 0.1% Tween 20
- Antibody dilution: 1:1000
- Secondary antibody: anti-rabbit (HRP)
- Detection: Enhanced Chemoluminescence (pico) 30s



\*Abeta (1-42) consists of both monomeric and partly aggregated mtrl.