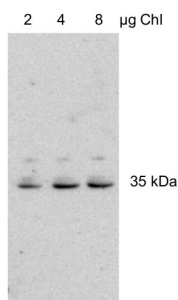


Product no **AS15 2834****Anti-At2g21960****Product information**

| | |
|-----------------------|-------------------------------------------------------------------------------------------------------------------------------------------------------------------------------------------------------------------------------------------------------------------------------|
| Immunogen | KLH-conjugated peptide, derived from <i>Arabidopsis thaliana</i> , UniProt: Q9SJ03 , TAIR: AT2G21960 |
| Host | Rabbit |
| Clonality | Polyclonal |
| Purity | Immunogen affinity purified serum in PBS pH 7.4. |
| Format | Lyophilized |
| Quantity | 50 µg |
| Reconstitution | For reconstitution add 50 µl of sterile water |
| Storage | Store lyophilized/reconstituted at -20°C; once reconstituted make aliquots to avoid repeated freeze-thaw cycles. Please remember to spin the tubes briefly prior to opening them to avoid any losses that might occur from material adhering to the cap or sides of the tube. |

Application information

| | |
|-------------------------------|----------------------------------------------------------------------------------|
| Recommended dilution | 1 : 1000 (WB) |
| Expected apparent MW | 35 kDa |
| Confirmed reactivity | <i>Arabidopsis thaliana</i> |
| Predicted reactivity | Higher plants Species of your interest not listed? Contact us |
| Not reactive in | No confirmed exceptions from predicted reactivity are currently known |

Application example

2, 4, 8 µg of chlorophyll from *Arabidopsis thaliana* thylakoids were separated on 12 % SDS-PAGE and blotted 1h to nitrocellulose membrane using tank transfer. Blots were blocked with 10% Milk for 1h at room temperature (RT) with agitation. Blot was incubated in the primary antibody at a dilution of 1 : 1 000 overnight with agitation. The antibody solution was decanted and the blot was rinsed briefly twice, then washed three times for 15 min in TBS-T at RT with agitation. Blot was incubated in secondary antibody (anti-rabbit IgG horseradish peroxidase conjugated, from Agrisera [AS09 602](#)) diluted to 1:8 000 in TTBS for 1h at RT. The blot was washed as above and developed for 5 min with ECL according to the manufacturer's instructions. Exposure time was 3 minutes.

Courtesy of Dr. Dr. Rikard Fristedt VU University Amsterdam, The Netherlands