

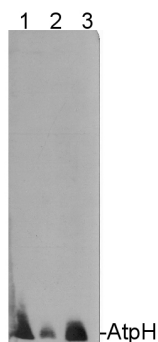
Product no **AS09 591****Anti-AtpH | ATP synthase subunit c (chloroplastic)****Product information**

Immunogen	KLH-conjugated peptides derived from AtpH subunit c of <i>Arabidopsis thaliana</i> UniProt: P56760 , TAIR: AtCg00140 and <i>Chlamydomonas reinhardtii</i> UniProt: Q37304
Host	Rabbit
Clonality	Polyclonal
Purity	Serum
Format	Lyophilized
Quantity	100 µl
Reconstitution	For reconstitution add 100 µl of sterile water
Storage	Store lyophilized/reconstituted at -20°C; once reconstituted make aliquots to avoid repeated freeze-thaw cycles. Please remember to spin the tubes briefly prior to opening them to avoid any losses that might occur from material adhering to the cap or sides of the tube.

Additional information | This product can be sold containing ProClin if requested

Application information

Recommended dilution	1 : 10 000 (WB)
Expected apparent MW	8 kDa (for <i>Arabidopsis thaliana</i>)
Confirmed reactivity	<i>Arabidopsis thaliana</i> , <i>Chlamydomonas reinhardtii</i>
Predicted reactivity	Algae, <i>Cannabis sativa</i> , <i>Cyclotella cryptica</i> , <i>Glycine max</i> , <i>Hordeum vulgare</i> , <i>Oryza sativa</i> , <i>Ostreococcus tauri</i> , <i>Physcomitrium patens</i> , <i>Pinus thunbergii</i> , <i>Pisum sativum</i> , <i>Phaeodactylum tricornutum</i> , <i>Populus alba</i> , <i>Thalassiosira pseudonana</i> , <i>Zea mays</i> , <i>Vitis vinifera</i>
	Species of your interest not listed? Contact us
Not reactive in	No confirmed exceptions from predicted reactivity are currently known
Additional information	Please note that increased incubation at 95°C (20-30 min) prior to loading is recommended to break the multimeric c-mer structure, detection of partial ring structures (e.g. 5 or 6 subunits) may occur
Selected references	Schulz et al. (2017) . Molecular architecture of the N-type ATPase rotor ring from <i>Burkholderia pseudomallei</i> . EMBO Rep. 2017 Apr;18(4):526-535. doi: 10.15252/embr.201643374.

Application example

10 µg of chlorophyll/well of *Chlamydomonas reinhardtii* total cell extract (1), *Chlamydomonas reinhardtii* subunit gamma deletion mutant thylakoid membrane fraction (2), *Arabidopsis thaliana* thylakoid membrane fraction (3), *Chlamydomonas reinhardtii* thylakoid membrane preparation (4) were separated on 12-18% acrylamide-8M urea gel and blotted to nitrocellulose membrane. Filters were blocked 1 h with 5% dry milk in 1 x PBS and probed with anti-ATP synthase subunit c antibody (**AS09 591**, 1: 10 000, 1h) and secondary HRP-conjugated anti-rabbit antibody (1: 10 000, 1 h) in 1 x PBS containing 5% dry milk. All steps were performed at RT with agitation. Signal was detected with chemiluminescent detection, exposure time 30".



This product is **for research use only** (not for diagnostic or therapeutic use)

contact: support@agrisera.com

Agrisera AB | Box 57 | SE-91121 Vännäs | Sweden | +46 (0)935 33 000 | www.agrisera.com

Arabidopsis membrane preparation has been done according to [Lezhneva et al. \(2008\)](#) A novel pathway of cytochrome c biogenesis is involved in the assembly of the cytochrome b6f complex in arabidopsis chloroplasts. J Biol. Chem., 283:24608-24616 and *Chlamydomonas* membranes were prepared according to [Chua & Bennoun \(1975\)](#) Thylakoid membrane polypeptides of *Chlamydomonas reinhardtii*: wild-type and mutant strains deficient in photosystem II reaction center. PNAS 72:2175-2179

Courtesy Dr. Yves Choquet, CNRS, France