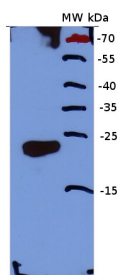


Product no **AS13 2666****Anti-Calcineurin/EF-hand motif****Product information**

<b>Immunogen</b>	KLH-conjugated synthetic peptide derived from known calcineurin/EF-hand motif sequences including <i>Arabidopsis thaliana</i> CPK21, UniProt: <a href="#">Q9ZSA2</a> , TAIR: <a href="#">AT4G04720</a> and found in other calcium-dependent protein kinases
<b>Host</b>	Rabbit
<b>Clonality</b>	Polyclonal
<b>Purity</b>	Immunogen affinity purified serum in PBS pH 7.4.
<b>Format</b>	Lyophilized
<b>Quantity</b>	50 µg
<b>Reconstitution</b>	For reconstitution add 50 µl of sterile water
<b>Storage</b>	Store lyophilized/reconstituted at -20°C; once reconstituted make aliquots to avoid repeated freeze-thaw cycles. Please remember to spin the tubes briefly prior to opening them to avoid any losses that might occur from material adhering to the cap or sides of the tube.

**Application information**

<b>Recommended dilution</b>	1 : 2500 (WB)
<b>Expected   apparent MW</b>	20-45 kDa
<b>Confirmed reactivity</b>	<i>Arabidopsis thaliana</i> , <i>Hordeum vulgare</i> , <i>Populus</i> sp., <i>Triticum aestivum</i>
<b>Predicted reactivity</b>	<i>Brassica napus</i> , <i>Theobroma cacao</i> Species of your interest not listed? <a href="#">Contact us</a>
<b>Not reactive in</b>	No confirmed exceptions from predicted reactivity are currently known
<b>Additional information</b>	Antibody is recognizing recombinant calcineurin expressed in <i>E.coli</i> .

**application information**

0,5µg of purified calcineurin with His-tag was separated on 12% SDS-PAGE and blotted 1h to PVDF using semi-dry transfer. Blots were blocked with 5% milk in TBS-T for 1h at room temperature (RT) with agitation. Blot was incubated in the primary antibody at a dilution of 1: 1 000 for 1h at RT with agitation. The antibody solution was decanted and the blot was rinsed briefly once, then washed 3 times for 10 min in TBS-T at RT with agitation. Blot was incubated in secondary antibody (anti-rabbit IgG horse radish peroxidase conjugated, [AS09 602](#) from Agrisera) diluted to 1:25 000 in TBS-T containing 2% milk for 1h at RT with agitation. The blot was washed as above and developed for 5 min with ECL according to the manufacturer's instructions. Exposure time was 300 seconds.

Courtesy of Dr. Lucyna Misztal, Institute of Molecular Biology and Biotechnology, Poznań, Poland