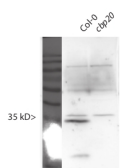


Product no **AS09 530****CBP20 | nuclear cap-binding protein subunit 2****Product information**

<b>Immunogen</b>	KLH-conjugated peptide, derived with <i>Arabidopsis thaliana</i> CBP20 protein <a href="#">Q9xFD1</a> , <a href="#">At5g44200</a>
<b>Host</b>	Rabbit
<b>Clonality</b>	Polyclonal
<b>Purity</b>	Immunogen affinity purified serum in PBS pH 7.4.
<b>Format</b>	Lyophilized
<b>Quantity</b>	200 µg
<b>Reconstitution</b>	For reconstitution add 200 µl of sterile water
<b>Storage</b>	Store lyophilized/reconstituted at -20°C; once reconstituted make aliquots to avoid repeated freeze-thaw cycles. Please remember to spin the tubes briefly prior to opening them to avoid any losses that might occur from material adhering to the cap or sides of the tube.

**Application information**

<b>Recommended dilution</b>	1 : 1000 (WB)
<b>Expected   apparent MW</b>	29,6   30 kDa
<b>Confirmed reactivity</b>	<i>Arabidopsis thaliana</i>
<b>Predicted reactivity</b>	<i>Glycine max</i> , <i>Hordeum vulgare</i> , <i>Lotus corniculatus</i> , <i>Nicotiana tabacum</i> , <i>Oryza sativa</i> , <i>Ricinus communis</i> , <i>Solanum lycopersicum</i> , <i>Solanum tuberosum</i> , <i>Zea mays</i> Species of your interest not listed? <a href="#">Contact us</a>
<b>Not reactive in</b>	No confirmed exceptions from predicted reactivity are currently known
<b>Selected references</b>	<a href="#">Raczynska</a> et al. (2013). TheSERRATEprotein isinvolved inalternativesplicing inArabidopsis thaliana. Nucleic Acids Res. Oct 16.

**Application example**

**25 µg of total protein** extracts from 10 days old seedlings of *Arabidopsis thaliana* (wild type and a CBP20 mutant) were separated on **12.5 % SDS-PAGE** and blotted 1h to **PVDF (tank blotting)**. Blots were blocked with Roti-block over night at 4°C agitation. Blot was incubated in the primary antibody at a dilution of 1 : 1 000 for 1h at RT with agitation. The antibody solution was decanted and the blot was rinsed briefly twice, then washed once for 15 min and 3 times for 5 min in TBS-T at RT with agitation. Blot was incubated in secondary antibody (anti-rabbit IgG horse radish peroxidase conjugated, from Agrisera [AS09 602](#)) diluted to 1:10 000 in for 1h at RT with agitation. The blot was washed as above and developed for 5 min with ECL according to the manufacturers instructions. Exposure time was 30 min.

Courtesy of Dr. Sascha Laubinger, ZMBP, Germany