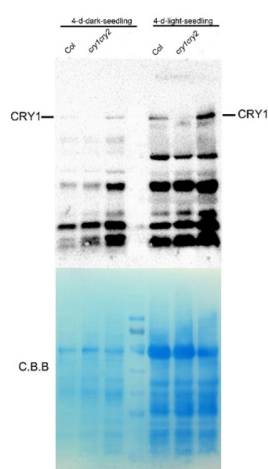


Product no **AS16 3933****Anti-CRY1 | Cryptochrome 1****Product information**

<b>Immunogen</b>	KLH-conjugated peptide derived from protein sequence of <i>Arabidopsis thaliana</i> CRY1, UniProt: <a href="#">Q43125</a> , TAIR: <a href="#">AT4G08920</a>
<b>Host</b>	Rabbit
<b>Clonality</b>	Polyclonal
<b>Purity</b>	Immunogen affinity purified serum in PBS pH 7.4.
<b>Format</b>	Lyophilized
<b>Quantity</b>	50 µg
<b>Reconstitution</b>	For reconstitution add 50 µl of sterile water
<b>Storage</b>	Store lyophilized/reconstituted at -20°C; once reconstituted make aliquots to avoid repeated freeze-thaw cycles. Please remember to spin the tubes briefly prior to opening them to avoid any losses that might occur from material adhering to the cap or sides of the tube.

**Application information****Recommended dilution** | 1 : 1000 (WB)**Expected | apparent MW** | 76.6 kDa**Confirmed reactivity** | *Arabidopsis thaliana*, *Nicotiana tabacum***Predicted reactivity** | *Cajanus cajan*, *Capsella orientalis*, *Corchorus capsularis*, *Fragaria ananassa*, *Fragaria vesca*, *Gossypium hirsutum*, *Medicago truncatula*, *Nelumbo nucifera*, *Populus tremula*, *Zostera marina*Species of your interest not listed? [Contact us](#)**Not reactive in** | Diatoms**Application example**

15 µg of total protein from *Arabidopsis thaliana* etiolated/greening seedling extracted with exact buffer (0.125 M Tris, 1% SDS, 10% Glycerol, 0.05 M Sodium metabisulfite) and denatured at 70°C for 5 min. Samples and Prestained Protein were separated on 10% SDS-PAGE(1.5 mm, 10-well) and blotted 50 min to PVDF using semi-dry. Blots were blocked with 5% nonfat milk for 1h at room temperature (RT) with agitation. Blot was incubated in the primary antibody at a dilution of 1: 1 000 for overnight at 4°C with agitation in TBS-T. The antibody solution was decanted and the blot was rinsed briefly twice, then washed 3 times for 5 min in TBS-T at RT with agitation. Blot was incubated in secondary antibody (anti-rabbit IgG horse radish peroxidase conjugated, from Agrisera, [AS09 602](#)) diluted to 1:5000 in 1% nonfat dry milk for 4h at RT with agitation. The blot was washed as above and developed for 2 min with ECL reagent. Exposure time was 10 min.

Courtesy of Duorong Xu, LMU, Munich, Germany