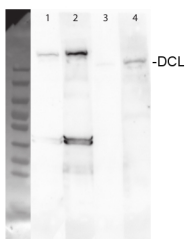


Product no **AS12 2103****Anti-DCL3 | Dicer-like protein 3****Product information**

Immunogen	KLH-conjugated synthetic peptide derived from <i>Arabidopsis thaliana</i> DCL3 sequence, Uniprot: Q9LXW7 , TAIR: At3g43920
Host	Rabbit
Clonality	Polyclonal
Purity	Immunogen affinity purified serum in PBS pH 7.4.
Format	Lyophilized
Quantity	200 µg
Reconstitution	For reconstitution add 200 µl of sterile water
Storage	Store lyophilized/reconstituted at -20°C; once reconstituted make aliquots to avoid repeated freeze-thaw cycles. Please remember to spin the tubes briefly prior to opening them to avoid any losses that might occur from material adhering to the cap or sides of the tube.

Application information

Recommended dilution	1 : 1000 (WB)
Expected apparent MW	117 kDa
Confirmed reactivity	<i>Arabidopsis thaliana</i>
Predicted reactivity	<i>Arabidopsis thaliana</i>
Not reactive in	<i>Zea mays</i>
Additional information	Recommend protein load is from 40-50 µg/well (using 1,5 mm spacers helps to obtain wider wells)

application example

50 µg of total protein from *Arabidopsis thaliana* total cell extract which came from the ground, frozen powder and has been directly transferred to 2x Laemmli sample buffer was separated on **15 % SDS-PAGE** and blotted over night at 64 mA to nitrocellulose (wet transfer). Blots were blocked with Roti-block over night at 4°C agitation. Blot was incubated in the primary antibody at a dilution of 1: 2000 (**1**) and 1: 500 (**2**) 1h at RT with agitation. The antibody solution was decanted and the blot was rinsed briefly twice, then washed once for 15 min and 3 times for 5 min in PBS-T at RT with agitation. Blot was incubated in secondary antibody (anti-rabbit IgG horse radish peroxidase conjugated, from Agrisera [AS09 602](#)) diluted to 1:10 000 for 1h at RT with agitation. The blot was washed as above and developed for 5 min with ECL according to the manufacturers instructions. Exposure time was 1 min.

Courtesy of Dr. Sascha Laubinger, ZMBP, Germany