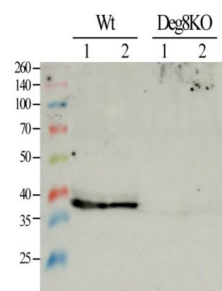


Product no **AS14 2767****Anti-Deg8 | protease Do-like 8 (chloroplastic)****Product information**

<b>Immunogen</b>	Recombinant mature Deg8 of <i>Arabidopsis thaliana</i> UniProt: <a href="#">Q9LU10</a> , TAIR: <a href="#">AT5G39830</a> , overexpressed in <i>E.coli</i>
<b>Host</b>	Rabbit
<b>Clonality</b>	Polyclonal
<b>Purity</b>	Serum
<b>Format</b>	Lyophilized
<b>Quantity</b>	50 µl
<b>Reconstitution</b>	For reconstitution add 50 µl of sterile water
<b>Storage</b>	Store lyophilized/reconstituted at -20°C; once reconstituted make aliquots to avoid repeated freeze-thaw cycles. Please remember to spin the tubes briefly prior to opening them to avoid any losses that might occur from material adhering to the cap or sides of the tube.

**Application information**

<b>Recommended dilution</b>	1 : 1000 (WB)
<b>Expected   apparent MW</b>	47   38 kDa
<b>Confirmed reactivity</b>	<i>Arabidopsis thaliana</i> , <i>Nicotiana tabacum</i>
<b>Predicted reactivity</b>	<i>Brassica pekinensis</i> , <i>Glycine max</i> , <i>Phaseolus vulgaris</i> , <i>Populus balsamifera</i> , <i>Ricinus communis</i> , <i>Solanum lycopersicum</i> , <i>Vitis vinifera</i> Species of your interest not listed? <a href="#">Contact us</a>
<b>Not reactive in</b>	No confirmed exceptions from predicted reactivity are currently known
<b>Additional information</b>	Primary antibody can be also incubated using 1 hour at RT protocol
<b>Selected references</b>	<a href="#">Zhao et al. (2024)</a> . Psb28 protein is indispensable for stable accumulation of PSII core complexes in <i>Arabidopsis</i> . Plant J. 2024 May 26. doi: 10.1111/tbj.16844.

**application example**

Total protein from *Arabidopsis thaliana* was extracted with buffer containing 0.2M Tris-HCl pH 6.8, 10% Glycerol, 8% SDS, 20%  $\beta$ -mercaptoethanol, 5M Urea. 10 µg of chlorophyll were separated on 12 % SDS-PAGE using tank transfer and blotted 1.5h to NC. Blots were blocked with 5% nonfat dry milk in TBS-T for 1h at room temperature (RT) with agitation. Blot was incubated in the primary antibody at a dilution of 1: 1000 in 5% nonfat dry milk in TBS-T over night at 40°C with agitation. The antibody solution was decanted and the blot was rinsed briefly once, then washed once for 5 min and 2 times for 15 min in TBS-T at RT with agitation. Blot was incubated in secondary antibody (anti-rabbit IgG horse radish peroxidase conjugated from Sigma) diluted to 1:10000 in 5% nonfat dry milk in TBS-T for 1h at RT with agitation. The blot was washed as above and developed for 2 min with ECL according to the manufacturer instructions. Exposure time was 1 minute.

Courtesy of Leah Naveh, The Robert H. Smith Institute of Plant Sciences and Genetics in Agriculture, Israel