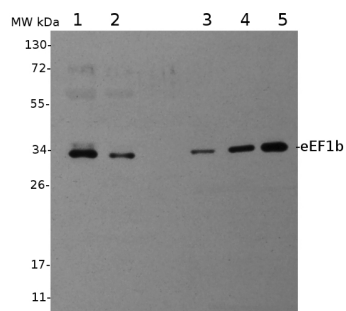


Product no **AS07 265****Anti-eEF1b | Elongation factor 1-beta****Product information**

Immunogen	Recombinant eEF1B-beta protein from <i>Arabidopsis thaliana</i> with no affinity tag, UniProt: Q9SI20 , TAIR: At2g18110
Host	Rabbit
Clonality	Polyclonal
Purity	Serum
Format	Lyophilized
Quantity	200 µl
Reconstitution	For reconstitution add 200 µl of sterile water
Storage	Store lyophilized/reconstituted at -20°C; once reconstituted make aliquots to avoid repeated freeze-thaw cycles. Please remember to spin the tubes briefly prior to opening them to avoid any losses that might occur from material adhering to the cap or sides of the tube.

Application information

Recommended dilution	1 : 1000 (WB)
Expected apparent MW	25 30 kDa
Confirmed reactivity	<i>Arabidopsis thaliana</i> , <i>Zea mays</i>
Predicted reactivity	<i>Brassica campestris</i> , <i>Hordeum vulgare</i> , <i>Nicotiana attenuata</i> , <i>Oryza sativa</i> <i>Pisum sativum</i> , <i>Ricinus communis</i> Species of your interest not listed? Contact us
Not reactive in	No confirmed exceptions from predicted reactivity are currently known
Selected references	Lázaro-Mixteco et al. (2012). The Absence of Heat Shock Protein HSP101 Affects the Proteome of Mature and Germinating Maize Embryos. <i>J. Proteome Res.</i> May 11, ahead of print.

Application example

10 µg of total cell extract from *Arabidopsis thaliana* (1), 5 µg of total cell extract from *Arabidopsis thaliana* (2), 2 ng of recombinant eEF1b (3), 4 ng of recombinant eEF1b (4), 8 ng of recombinant eEF1b (5) were separated on **15% SDS-PAGE** and blotted 1h to **nitrocellulose** (Biorad). Blots were incubated in the primary antibody at a dilution of 1: 1000 for 1h at room temperature with agitation and secondary HRP-conjugated antibody (1: 10 000).