

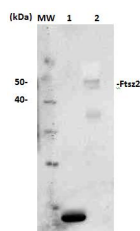
Product no **AS13 2651****Anti-FtsZ2 | Plant cell division protein ftsZ2****Product information**

<b>Immunogen</b>	Recombinant part of <i>Arabidopsis thaliana</i> FtsZ2 conserved in FtsZ2-1 UniProt: <a href="#">Q82533</a> , TAIR: <a href="#">At2g36250</a> , FtsZ2-2 UniProt: <a href="#">Q9LXJ0</a> , TAIR: <a href="#">AT3G52750</a>
<b>Host</b>	Rabbit
<b>Clonality</b>	Polyclonal
<b>Purity</b>	Serum
<b>Format</b>	Lyophilized
<b>Quantity</b>	50 µl
<b>Reconstitution</b>	For reconstitution add 50 µl of sterile water
<b>Storage</b>	Store lyophilized/reconstituted at -20°C; once reconstituted make aliquots to avoid repeated freeze-thaw cycles. Please remember to spin the tubes briefly prior to opening them to avoid any losses that might occur from material adhering to the cap or sides of the tube.

**Additional information** | Antibody available in 3 various pack sizes: 50, 100 and 150 µl - please, inquire

**Application information**

<b>Recommended dilution</b>	1 : 2000 (WB)
<b>Expected   apparent MW</b>	50.7 kDa
<b>Confirmed reactivity</b>	<i>Arabidopsis thaliana</i> , <i>Hordeum vulgare</i>
<b>Predicted reactivity</b>	<i>Glycine max</i> , <i>Jatropha manihot</i> , <i>Ricinus communis</i>
	Species of your interest not listed? <a href="#">Contact us</a>
<b>Not reactive in</b>	No confirmed exceptions from predicted reactivity are currently known

**Application example**

2 µg of recombinant FtsZ2 fragment (~10 kDa) (**1**) and total protein extracted with PEB [AS08 300](#) from leaf tissue *Arabidopsis thaliana* (**2**) were separated on 4-12% NuPage (Invitrogen) LDS-PAGE and blotted 1 h to PVDF. Filters were blocked 1 h with 2% low-fat milk powder in TBS-T (0.1% TWEEN 20) and probed with FtsZ2 antibody (AS13 2651, 1:2000, 1 h) and secondary anti-rabbit (1:25 000, 1 h) antibody (HRP conjugated, secondary antibody [AS09 602](#) in TBS-T containing 2% low fat milk powder. Antibody incubations were followed by washings in TBS-T (15, +5, +5, +5 min). All steps were performed at RT with agitation. The signal was developed for 5 min with ECL according to the manufacturer's instructions. Exposure time was 2 min.