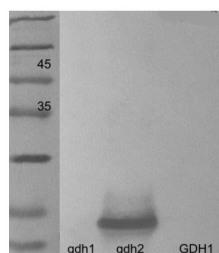


Product no **AS16 4034****Anti-GDH2 | Glutamate dehydrogenase 2****Product information**

<b>Immunogen</b>	KLH-conjugated synthetic peptide derived from GDH2 from <i>Lupinus luteus</i>
<b>Host</b>	Rabbit
<b>Clonality</b>	Polyclonal
<b>Purity</b>	Serum
<b>Format</b>	Lyophilized
<b>Quantity</b>	50 µl
<b>Reconstitution</b>	For reconstitution add 50 µl, of sterile water
<b>Storage</b>	Lyophilized antibody can be stored at -20°C for up to 3 years. Re-constituted antibody can be stored at 4°C for several days to weeks. Once reconstituted make aliquots to avoid repeated freeze-thaw cycles. Please remember to spin the tubes briefly prior to opening them to avoid any losses that might occur from material adhering to the cap or sides of the tube.

**Application information**

<b>Recommended dilution</b>	1 : 1000 (WB)
<b>Expected   apparent MW</b>	44.7 kDa
<b>Confirmed reactivity</b>	<i>Lupinus luteus</i>
<b>Predicted reactivity</b>	<i>Hordeum vulgare</i> , <i>Zea mays</i>
	Species of your interest not listed? <a href="#">Contact us</a>
<b>Selected references</b>	<a href="#">Lehmann</a> et al. (2011). Organ-specific expression of glutamate dehydrogenase (GDH) subunits in yellow lupine. J Plant Physiol. 2011 Jul 1;168(10):1060-6. doi: 10.1016/j.jplph.2010.12.016.

**Application example**

Purified, recombinant GDH1 and GDH2 subunits and whole GDH1 from *Lupinus luteus* were separated on 12 % SDS-PAGE and blotted 1h to nitrocellulose membrane. Blot was incubated in the primary antibody at a dilution of 1: 1 000 for 1h at RT with agitation. Antibody binding was visualized through STRAP/HRP with 2-amino benzidine.

Courtesy of Dr. Teresa Lehmann, Adam Mickiewicz University, Poland