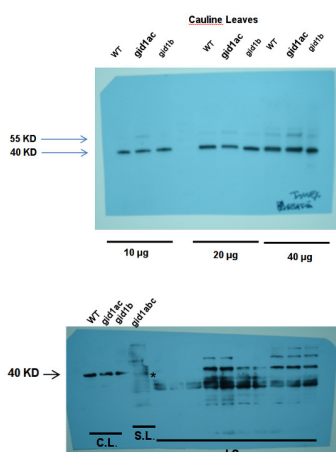


Product no **AS14 2800****Anti-GID1c | Gibberellin receptor GID1C****Product information**

Immunogen	recombinant full-length <i>Arabidopsis thaliana</i> GID1c, UniProt: Q940G6 TAIR: At5g27320
Host	Rabbit
Clonality	Polyclonal
Purity	Serum
Format	Lyophilized
Quantity	50 µl
Reconstitution	For reconstitution add 50 µl of sterile water
Storage	Store lyophilized/reconstituted at -20°C; once reconstituted make aliquots to avoid repeated freeze-thaw cycles. Please remember to spin the tubes briefly prior to opening them to avoid any losses that might occur from material adhering to the cap or sides of the tube.

Application information

Recommended dilution	1 : 5000 (WB)
Expected apparent MW	38 kDa (<i>Arabidopsis</i>)
Confirmed reactivity	<i>Arabidopsis thaliana</i>
Predicted reactivity	<i>Arabidopsis alpina</i> , <i>Oryza sativa</i> , <i>Ricinus communis</i> Species of your interest not listed? Contact us
Not reactive in	No confirmed exceptions from predicted reactivity are currently known
Additional information	This antibody is also recognizing GST-GID1,
Selected references	Hauvermale et al. (2015) . Loss of <i>Arabidopsis thaliana</i> seed dormancy is associated with increased accumulation of the GID1 GA hormone receptors. <i>Plant Cell Physiol.</i> 2015 Jul 1. pii: pcv084.



20 µg of total protein from *Arabidopsis thaliana* cauline leaves (C.L.), seedling (S.L.) material or imbibed seeds (I.S.) was extracted in 50 mM Phosphate buffer (pH 7.0) with 1X protease inhibitor (Sigma Aldrich) and was separated on a TGX and KD SDS-PAGE gel (BioRad) and blotted 14 min to PVDF using BioRad semi-dry turbo transfer system. Blots were blocked with 2% ECL advance (GE healthcare) for 1h at room temperature (RT) with agitation. Blot was incubated in the primary antibody at a dilution of 1: 1 000 overnight at RT with agitation. The antibody solution was decanted and the blot was rinsed briefly twice, then washed once for 15 min and 3 times for 5 min in TBS-T at RT with agitation. Blot was incubated in secondary antibody (anti-rabbit IgG horse radish peroxidase conjugated, Agrisera, AS09 602) diluted to 1:75,000 in for 1h at RT with agitation. The blot was washed as above and developed for 5 min with high sensitivity chemiluminescent detection reagent, according to the manufacturer's instructions. Exposure time was 30 seconds.



This product is **for research use only** (not for diagnostic or therapeutic use)

contact: support@agrisera.com

Agrisera AB | Box 57 | SE-91121 Vännäs | Sweden | +46 (0)935 33 000 | www.agrisera.com

Courtesy of Dr. Amber Hauvermale, Department of Crop and Soil Sciences, Washington State University, USA