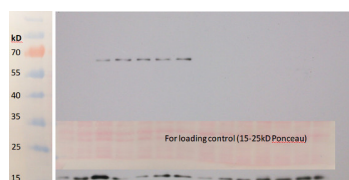


Product no **AS15 2882****Anti-GPXh | Glutathione peroxidase (algal)****Product information**

Immunogen	KLH-conjugated synthetic peptide derived from glutathione peroxidase protein sequence from <i>Chlamydomonas reinhardtii</i> , UniProt: O22448
Host	Rabbit
Clonality	Polyclonal
Purity	Immunogen affinity purified serum in PBS pH 7.4.
Format	Lyophilized
Quantity	50 µg
Reconstitution	For reconstitution add 50 µl of sterile water
Storage	Store lyophilized/reconstituted at -20°C; once reconstituted make aliquots to avoid repeated freeze-thaw cycles. Please remember to spin the tubes briefly prior to opening them to avoid any losses that might occur from material adhering to the cap or sides of the tube.

Application information

Recommended dilution	1 : 5000 (WB)
Expected apparent MW	18 15 kDa
Confirmed reactivity	<i>Chlamydomonas reinhardtii</i>
Predicted reactivity	<i>Volvox carteri</i> Species of your interest not listed? Contact us

application example

10 µg of a total protein from *Chlamydomonas reinhardtii* extracted with 2 % SDS/50 mM TRIS pH 6.8 + protease inhibitor cocktail were separated on 12 % SDS-PAGE and blotted for 1 h to PVDF using semi-dry transfer. Blots were blocked with 5 % low-fat milk powder TBS + 0.1 % Tween for 1 h at room temperature (RT) with agitation. Blot was incubated in the primary antibody at a dilution of 1 : 5 000 for 1 h at RT with agitation. The antibody solution was decanted and the blot was rinsed, then washed 3 times each for 5 min in TBS-T at RT with agitation. Blot was incubated in secondary antibody (anti-rabbit IgG horse radish peroxidase conjugated) diluted to 1:25 000 in 2 % low-fat milk powder TBS + 0.1 % Tween for 1 h at RT with agitation. The blot was washed as above and developed for 30 s with chemiluminescent detection reagent according to the manufacturer's instructions. Exposure time was typically 30 seconds.

Courtesy Dr. Thomas Roach, University of Innsbruck, Austria