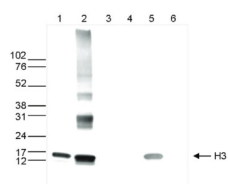


Product no **AS16 3197****Anti-H3 | Histone 3 core | (monoclonal)****Product information**

<b>Immunogen</b>	KLH-conjugated synthetic peptide containing an unmodified sequence from the C-terminus of the protein.
<b>Host</b>	Mouse
<b>Clonality</b>	Monoclonal
<b>Purity</b>	Protein A purified in PBS with 0.05 % sodium azide.
<b>Format</b>	Liquid
<b>Quantity</b>	50 µg
<b>Storage</b>	Store lyophilized/reconstituted at -20°C; once reconstituted make aliquots to avoid repeated freeze-thaw cycles. Please remember to spin the tubes briefly prior to opening them to avoid any losses that might occur from material adhering to the cap or sides of the tube.
<b>Additional information</b>	Antibody has been purified using Protein A. Antibody is provided in PBS containing 0.05% azide and 0.05% ProClin 300.

**Application information**

<b>Recommended dilution</b>	1-2 µg/IP (ChIP), 1 : 1000 (WB)
<b>Expected   apparent MW</b>	15 kDa
<b>Confirmed reactivity</b>	Human
<b>Predicted reactivity</b>	<i>Solanum lycopersicum</i> , <i>Populus</i> sp., <i>Zea mays</i>
<b>Not reactive in</b>	No confirmed exceptions from predicted reactivity are currently known

**application example**

**Western blot** was performed on whole cell (25 µg, lane 1) and histone extracts (15 µg, lane 2) from HeLa cells, and on 1 µg of recombinant histone H2A, H2B, H3 and H4 (lane 3, 4, 5 and 6, respectively). The anti-H3 core antibody was diluted 1:1 000 in TBS-Tween containing 5% skimmed milk.