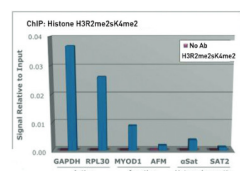
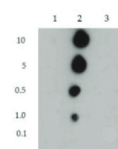
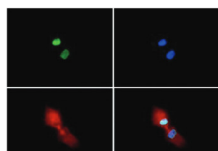


Product no **AS16 3185****H3R2me2(sym)K4me2 | Histone H3 (sym-dimethylated Arg2, dimethyl Lys4)****Product information****Immunogen** | KLH-conjugated synthetic peptide**Host** | Rabbit**Clonality** | Polyclonal**Purity** | Immunogen affinity purified serum.**Format** | Liquid**Quantity** | 50 µg**Storage** | Store lyophilized/reconstituted at -20 °C; once reconstituted make aliquots to avoid repeated freeze-thaw cycles. Please remember to spin the tubes briefly prior to opening them to avoid any losses that might occur from material adhering to the cap or sides of the tube.**Additional information** | This antibody preparation is provided in 20 mM Potassium Phosphate pH 7.2, 150 mM NaCl, 0.01% sodium azide and 30% glycerol**Application information****Recommended dilution** | 2-5 µg/million cells (ChIP), 1 : 1000 (Dot), 1 : 200 (IF), 1 : 50 (IHC), 1 : 500 (WB)**Expected | apparent MW** | 15 kDa**Confirmed reactivity** | Human**Predicted reactivity** | *Caenorhabditis elegans*, Chicken, *Drosophila melanogaster*, Mouse, Plant, Rat, *Xenopus sp.***Not reactive in** | No confirmed exceptions from predicted reactivity are currently known**application information**

**Chromatin Immunoprecipitation:** using anti-H3R2me2sK4me2 antibodies. Chromatin from one million formaldehyde cross-linked HeLa cells was used with 2 µg of H3R2me2sK4me2 and 20 µl of magnetic IgG beads per immunoprecipitation. A no antibody (No Ab) control was also used. Immunoprecipitated DNA was quantified using quantitative PCR and normalized to the input chromatin.

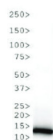


**Dot Blot:** using anti-H3R2me2sK4me2 antibodies. Lane 1: R2me2. Lane 2: R2me2/K4me2. Lane 3: K4me2. Load: 0.1, 1, 0.5, 5, and 10 picomoles of peptide. Primary antibody used at a 1:1 000 dilution for 45 min at 4 °C. Secondary antibody: Dylight®488 rabbit secondary antibody at 1:10 000 for 45 min at RT.

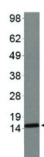


**Immunofluorescence:** using anti-H3R2me2sK4me2 antibodies. Tissue: HeLa cells. Fixation: 0.5% PFA. Primary antibody used at a 1:100 dilution for 1 h at RT. Secondary antibody: Dylight® 488 secondary antibody at 1:10 000 for 45 min at RT. Localization: Histone H3R2me2sK4me2 is nuclear and chromosomal. Staining: Histone H3R2me2sK4me2 is expressed in green, nuclei and alpha-tubulin are counterstained with DAPI

(blue) and Dylight® 594 (red).



**Western Blot:** using anti-H3R2me2sK4me2 antibodies. 30 µg of *C. elegans* embryo cell lysate. Primary antibody used at a 1:500 dilution overnight at 4°C. Secondary antibody: IRDye800™ rabbit secondary antibody at 1:10 000 for 45 min at RT.



**Western Blot:** using anti-H3R2me2sK4me2 antibodies. 30 µg of NIH-3T3 histone extracts. Primary antibody used at 1:500 overnight at 4°C. Secondary antibody: IRDye800™ rabbit secondary antibody at 1:10 000 for 45 min at RT.