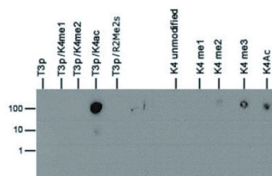
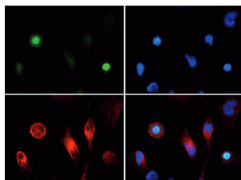


Product no **AS16 3170****Anti-H3T3pK4ac | Histone H3 (ac Lys4, p Thr3)****Product information**

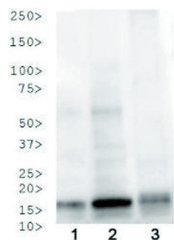
<b>Immunogen</b>	KLH-conjugated synthetic acetylated/phosphorylated peptide surrounding Lysine 4 and Threonine 3 of human Histone H3
<b>Host</b>	Rabbit
<b>Clonality</b>	Polyclonal
<b>Purity</b>	Immunogen affinity purified serum.
<b>Format</b>	Liquid
<b>Quantity</b>	50 µg
<b>Storage</b>	Store lyophilized/reconstituted at -20°C; once reconstituted make aliquots to avoid repeated freeze-thaw cycles. Please remember to spin the tubes briefly prior to opening them to avoid any losses that might occur from material adhering to the cap or sides of the tube.
<b>Additional information</b>	This antibody preparation is provided in 20 mM Potassium Phosphate pH 7,2, 150 mM NaCl, 0,01% sodium azide and 30% glycerol

**Application information****Recommended dilution** | 2-5 µg/million cells (ChIP), 1 : 1000 (Dot), 1 : 100 (IF), 1 : 50 (IHC), 1 : 500 (WB)**Expected | apparent MW** | 15 kDa**Confirmed reactivity** | Caenorhabditis elegans, Human**Predicted reactivity** | Chicken, *Drosophila melanogaster*, Mouse, Plant, Rat, *Xenopus sp.***Not reactive in** | No confirmed exceptions from predicted reactivity are currently known**application example**

Dot Blot using anti-H3T3pK4ac antibodies. Lane 1: T3p. Lane 2: T3pK4me1. Lane 3: T3pK4me2. Lane 4: T3pK4ac. Lane 5: T3pR2me2s. Lane 6: K4 unmodified. Lane 7: K4me1. Lane 8: K4me2. Lane 9: K4me3. Lane 10: K4ac. Load: 1, 10, and 100 picomoles of peptide. Primary antibody used at 1:1,000 dilution for 45 min at 4°C. Secondary antibody: Dylight®488 rabbit secondary antibody at 1:10 000 for 45 min at RT.



**Immunofluorescence** using anti-H3T3pK4ac antibodies. Tissue: HeLa cells. Fixation: 0.5% PFA. Primary antibody used at a 1:100 dilution for 1 h at RT. Secondary antibody: Dylight® 488 secondary antibody at 1:10 000 for 45 min at RT. Localization: Histone H3T3pK4ac is nuclear and chromosomal. Staining: H3T3pK4ac is expressed in green while the nuclei and alpha-tubulin were coexpressed with DAPI (blue) and Dylight® 550 (red).



**Western Blot** using anti-phospho-acetyl-Histone H3 antibodies (H3T3pK4ac). Lane 1: HeLa histone extracts. Lane 2: NIH-3T3 histone extracts. Lane 3: *C. elegans* embryo lysate. Load: 30 µg per lane. Primary antibody used at 1:500 overnight at 4 °C. Secondary antibody: IRDye800™ rabbit secondary antibody at 1:10 00 for 45 min at RT.