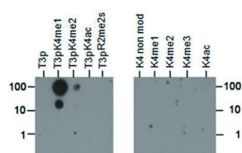
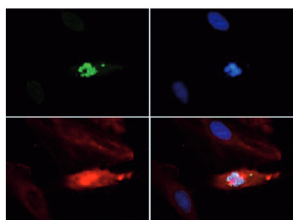
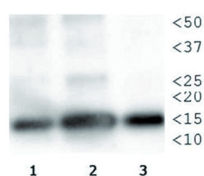


Product no **AS16 3168****Anti-H3T3pK4me1 | Histone H3 (p Thr3, monomethylated Lys4)****Product information****Immunogen** | KLH-conjugated synthetic peptide**Host** | Rabbit**Clonality** | Polyclonal**Purity** | Immunogen affinity purified serum.**Format** | Liquid**Quantity** | 50 µg**Storage** | Store lyophilized/reconstituted at -20°C; once reconstituted make aliquots to avoid repeated freeze-thaw cycles. Please remember to spin the tubes briefly prior to opening them to avoid any losses that might occur from material adhering to the cap or sides of the tube.**Additional information** | This antibody preparation is provided in 20 mM Potassium Phosphate pH 7,2, 150 mM NaCl, 0,01% sodium azide and 30% glycerol**Application information****Recommended dilution** | 1 : 1000 (Dot), 1 : 100 (IF), 1 : 100 (IHC), 1 : 1000 (WB)**Expected | apparent MW** | 15 kDa**Confirmed reactivity** | Human**Predicted reactivity** | *Caenorhabditis elegans*, *Drosophila melanogaster*, Mouse, Plant, Rat, *Xenopus sp.***Not reactive in** | No confirmed exceptions from predicted reactivity are currently known**application example**

Dot Blot using H3T3pK4me1 antibodies. Load: 1, 10, and 100 picomoles of the different peptides. Primary antibody used at a 1:1 000 dilution for 45 min at 4°C. Secondary antibody: HRP rabbit secondary antibody at 1:40 000 for 45 min at RT.



Immunofluorescence using anti-H3T3pK4me1 antibodies. Tissue: HeLa cells. Fixation: 0.5% PFA. Primary antibody: used at a 1:100 dilution for 1 h at RT. Secondary antibody: Dylight 488 secondary antibody at 1:10 000 for 45 min at RT. Localization: Histone H3T3pK4me1 is nuclear and chromosomal. Staining: Histone H3T3pK4me1 is expressed in green while the nuclei and alpha-tubulin were coexpressed with DAPI (blue) and Dylight 550 (red).



This product is **for research use only** (not for diagnostic or therapeutic use)

contact: support@agrisera.com

Agrisera AB | Box 57 | SE-91121 Vännäs | Sweden | +46 (0)935 33 000 | www.agrisera.com

Western Blot using anti-H3T3pK4me1 antibodies. Lane 1: HeLa histone extracts. Lane 2. NIH 3T3 histone extracts Lane 3. *C. elegans* embryo lysate. Load: 30 µg per lane. Primary antibody used at a 1:1 000 dilution overnight at 4°C. Secondary antibody: IRDye800™ rabbit secondary antibody at 1:10 000 for 45 min at RT.