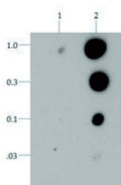
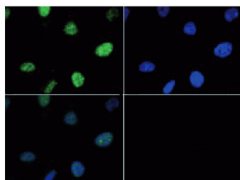
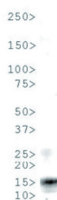


Product no **AS16 3176****H3T6pK9me3 | Histone H3 (trimethylated Lys9, p Thr6)****Product information****Immunogen** | KLH-conjugated synthetic peptide**Host** | Rabbit**Clonality** | Polyclonal**Purity** | Immunogen affinity purified serum.**Format** | Liquid**Quantity** | 50 µg**Storage** | Store lyophilized/reconstituted at -20°C; once reconstituted make aliquots to avoid repeated freeze-thaw cycles. Please remember to spin the tubes briefly prior to opening them to avoid any losses that might occur from material adhering to the cap or sides of the tube.**Additional information** | This antibody preparation is provided in 20 mM Potassium Phosphate pH 7,2, 150 mM NaCl, 0,01% sodium azide and 30% glycerol**Application information****Recommended dilution** | 2-5 µg/million cells (ChIP), 1 : 1000 (Dot), 1 : 100 (IF), 1 : 200 (IHC), 1 : 500 (WB)**Expected | apparent MW** | 15 kDa**Confirmed reactivity** | *Caenorhabditis elegans*, Human**Predicted reactivity** | Chicken, *Drosophila melanogaster*, Mouse, Plant, Rat, *Xenopus sp.***Not reactive in** | No confirmed exceptions from predicted reactivity are currently known**application example**

Dot Blot using anti-H3T6p antibodies. Lane 1: H3T6un. Lane 2: H3T6p. Load: 1, 0.3, 0.1, 0.03 picomoles of peptide. Primary antibody used at a 1:1000 dilution for 45 min at 4°C. Secondary antibody: Dylight®488 rabbit secondary antibody at 1:10 000 for 45 min at RT.



Immunofluorescence using anti-H3T6p antibodies. Tissue: HeLa cells. Fixation: 0.5% PFA. Primary antibody used at a 1:100 dilution for 1 h at RT. Secondary antibody: FITC secondary antibody at 1:10,000 for 45 min at RT. Localization: Histone H3T6p is nuclear and chromosomal. Staining: H3T6p is expressed in green and the nuclei are counterstained with DAPI (blue).



Western Blot using anti-H3T6p antibodies. 30 µg *C. elegans* embryo lysate. Primary antibody incubated at a 1:500 dilution overnight at 4°C.

Secondary antibody: IRDye800™ rabbit secondary antibody at 1:10 000 for 45 min at RT.



Western Blot of H3T6p antibody on 30 µg HeLa histone extracts. Primary antibody: incubated at a 1:500 dilution overnight at 4°C. Secondary antibody: IRDye800™ rabbit secondary antibody at 1:10 000 for 45 min at RT.