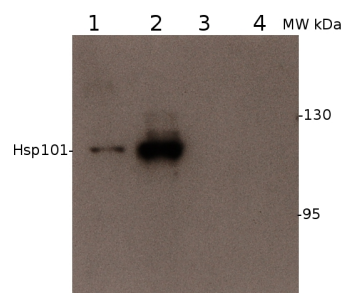


Product no **AS08 283****HSP101 | ClpB heat shock protein, N-terminal (chicken antibody)****Product information**

<b>Immunogen</b>	recombinant <i>Arabidopsis thaliana</i> Hsp101/ClpB, N-terminal 145 amino acids UniProt: <a href="#">P42730</a> , TAIR: <a href="#">At1g74310</a>
<b>Host</b>	Chicken
<b>Clonality</b>	Polyclonal
<b>Purity</b>	Purified, total IgY (chicken egg yolk immunoglobulin) in PBS pH 8. Contains 0.02 % sodium azide.
<b>Format</b>	Liquid
<b>Quantity</b>	200 µl
<b>Storage</b>	Store at 4 °C; make aliquots to avoid working with a stock. Please remember to spin the tubes briefly prior to opening them to avoid any losses that might occur from material adhering to the cap or sides of the tube.

**Application information**

<b>Recommended dilution</b>	1 : 1000 (WB)
<b>Expected   apparent MW</b>	101 kDa
<b>Confirmed reactivity</b>	<i>Arabidopsis thaliana</i>
<b>Predicted reactivity</b>	<i>Glycine max</i> , <i>Nicotiana tabacum</i> , <i>Vitis vinifera</i> Species of your interest not listed? <a href="#">Contact us</a>
<b>Not reactive in</b>	No confirmed exceptions from predicted reactivity are currently known

**Application example**

**2 µg of total protein** from (1) *Arabidopsis thaliana* WT stressed at 22°C, (2) *Arabidopsis thaliana* WT stressed at 38°C for 1.5 hour followed by a transfer to 22° for 2 hours, (3) *Arabidopsis thaliana* Hsp101 null mutant grown at 22° C, (4) *Arabidopsis thaliana* Hsp101 null mutant stressed at 38°C for 1.5 hour followed by a transfer to 22°C for 2 hours were separated on **8 % SDS-PAGE** and blotted 1h to **nitrocellulose** (Biorad). Blots were incubated in the primary antibody at a dilution of 1: 1 000 for 1h at room temperature with agitation and a secondary HRP-conjugated antibody (1: 10 000).