

Product no **AS13 2665**

## Anti-KDEL | Endoplasmic reticulum retention signal

### Product information

**Immunogen** | KDEL containing peptide

**Host** | Rabbit

**Clonality** | Polyclonal

**Purity** | Total IgG. Protein A purified in PBS pH 7.2. Contains 50% glycerol and 0.09% sodium azide.

**Format** | Liquid

**Quantity** | 50 µg (1 mg/ml)

**Storage** | Store at -20 °C for 1 year; make aliquots to avoid repeated freeze-thaw cycles.

**Additional information** | Immunogen affinity purified antibodies are present in PBS, pH 7,4 with 0,09 % sodium azide and 50 % glycerol,

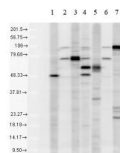
### Application information

**Recommended dilution** | 1 : 1000 (WB)

**Confirmed reactivity** | Human, Mouse, Rat

**Not reactive in** | No confirmed exceptions from predicted reactivity are currently known

### application example



1. PDI control antibody  
 2. KDEL control antibody clone 10C3  
 3. Osp74 control antibody  
 4. SPC-150  
 5. Cytokeratin control antibody  
 6. KDEL control antibody clone 10C3  
 7. Osp74 control antibody  
 Mixed human cell lysate (100µg per lane) 1:1000 dilutions;  
 KDEL(10C3) control antibody 1:500 dilution.