

product **AS06 148**
LRIG1 | Lig-1

product information

background	LRIG1 protein Q96JA1 is coded by a gene on a chromosome band 3p14.3, this region is known to be deleted in various human cancers. LRIG1 is considered to be a a tumour suppressor gene in humans. LRIG1 is an integral cell-surface membrane protein that is expressed by specific cells in various human tissues and that its 143-kDa form might be cleaved into 111-kDa and 32-kDa fragments. The LRIG1 protein may inhibit the growth of tumors of glial cells and the down-regulation of the LRIG1 gene may be involved in the development and progression of the tumor.
immunogen	KLH -conjugated synthetic peptide; the peptide corresponds to part of the cytoplasmic tail (C-terminal part) of the protein
antibody format	rabbit; polyclonal; affinity purified IgG in PBS pH 7.4, BSA 1mg/ml; lyophilized
quantity	100 µg - for reconstitution add 90,9 µl of sterile water.
storage	store lyophilized/reconstituted at -20°C; once reconstituted make aliquots to avoid repeated freeze-thaw cycles. Please, remember to spin tubes briefly prior to opening them to avoid any losses that might occur from lyophilized material adhering to the cap or sides of the tubes.
tested applications	Western blot (WB), immunohistochemistry (IHC)
additional information	Peptide used to elicit Lrig1 antibody is not conserved in Lrig3 protein.

application information

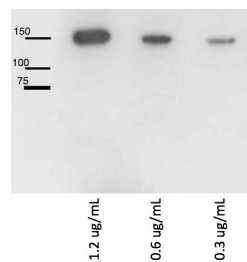
recommended dilution	1 µg/ml (WB), use at an assay dependent dilution (IHC)
expected apparent MW	143 kDa
confirmed reactivity	human
predicted reactivity	human
not reactive in	mouse
additional information	immunoblotting demonstrated LRIG1 protein in tissue lysates from normal human prostate, mammary epithelial cells, ileum, stomach, lung, and cerebral cortex

selected references

[Nilsson et al. \(2003\)](#) LRIG1 protein in human cells and tissues. *Cell and Tissue Research*, 312(1): 65-71.

application information

western blot



5 µg of total protein from LRIG1-transfected COS-7 cells extracted with lysis buffer (100 mM Tris-HCl pH 7.5 1M, 300mM NaCl 5M, 2% Triton X-100)

5 µg of total protein from LRIG1-transfected COS-7 cells extracted with lysis buffer (100mM Tris-HCl pH 7.5 1M, 300mM NaCl 5M, 2% Triton X-100)