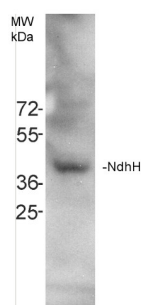


Product no **AS16 4065****Anti-NdhH | NAD(P)H-quinone oxidoreductase subunit H (chloroplastic)****Product information**

Immunogen	KLH-conjugated synthetic peptide derived from <i>Arabidopsis thaliana</i> NdhH protein sequence, UniProt: P56753-1 , TAIR: ATCG01110
Host	Rabbit
Clonality	Polyclonal
Purity	Immunogen affinity purified serum in PBS pH 7.4.
Format	Lyophilized
Quantity	50 µg
Reconstitution	For reconstitution add 50 µl of sterile water
Storage	Store lyophilized/reconstituted at -20 °C; once reconstituted make aliquots to avoid repeated freeze-thaw cycles. Please remember to spin the tubes briefly prior to opening them to avoid any losses that might occur from material adhering to the cap or sides of the tube.

Application information

Recommended dilution	1:5000 (WB)
Expected apparent MW	45 49 kDa
Confirmed reactivity	<i>Arabidopsis thaliana</i> , <i>Setaria viridis</i> , <i>Zea mays</i>
Predicted reactivity	<i>Cannabis sativa</i> , <i>Hordeum vulgare</i> , <i>Microcystis aeruginosa</i> PCC 7806, <i>Physcomitrella patens</i> , <i>Solanum lycopersicum</i> , <i>Synechocystis</i> sp.
	Species of your interest not listed? Contact us
Not reactive in	<i>Pisum sativum</i> , <i>Phaseolus vulgaris</i>
Additional information	This product can be sold containing proclin if requested
Selected references	<p>Opatíková and Kouřil (2024). Unique structural attributes of the PSI-NDH supercomplex in <i>Physcomitrium patens</i>. <i>Plant J.</i> 2024 Nov 3. doi: 10.1111/tpj.17116.</p> <p>Penzler et al. (2024). A <i>pgr5</i> suppressor screen uncovers two distinct suppression mechanisms and links cytochrome b6f complex stability to PGR5. <i>Plant Cell</i>. 2024 Mar 27:koae098. doi: 10.1093/plcell/koae098.</p> <p>Ermakova et al. (2024). Chloroplast NADH dehydrogenase-like complex-mediated cyclic electron flow is the main electron transport route in C4 bundle sheath cells. <i>New Phytol.</i> 2024 Jul 22.doi: 10.1111/nph.19982.</p> <p>Seiml-Buchinger et al. (2022) Ascorbate peroxidase postcold regulation of chloroplast NADPH dehydrogenase activity controls cold memory. <i>Plant Physiol.</i> 2022;190(3):1997-2016. doi:10.1093/plphys/kiac355</p> <p>Wada et al. (2021) Identification of a Novel Mutation Exacerbated the PSI Photoinhibition in <i>pgr5/pgr1</i> Mutants; Caution for Overestimation of the Phenotypes in <i>Arabidopsis pgr5-1</i> Mutant. <i>Cells</i>. 2021 Oct 26;10(11):2884. doi: 10.3390/cells10112884. PMID: 34831107; PMCID: PMC8616342.</p> <p>Nikkanen et al. (2018). Regulation of chloroplast NADH dehydrogenase-like complex by NADPH-dependent thioredoxin system. <i>CSH, BioRxiv</i>, doi: https://doi.org/10.1101/261560.</p>



Total proteins of *Arabidopsis thaliana* leaf were precipitated with 10% TCA, washed with acetone and solubilized in a buffer with 8M urea, 100 mM Tris-HCl pH 7.5, 1 mM EDTA, 2% SDS. 10 µg of TCA precipitates were separated in a BioRad TGX 4-20% precast gels and blotted 1h to a PVDF

This product is **for research use only** (not for diagnostic or therapeutic use)

contact: support@agrisera.com

Agrisera AB | Box 57 | SE-91121 Vännäs | Sweden | +46 (0)935 33 000 | www.agrisera.com

membrane using Høefer semi-dry blotter. Blot was blocked with 8 % milk in TTBS for 30 min. at room temperature (RT) with agitation. Blot was incubated in the primary antibody at a dilution of 1: 5 000 overnight in +4 °C. The antibody solution was decanted and the blot was washed 3 x 5 min with TTBS at RT with agitation. Blot was incubated in secondary antibody (anti-rabbit IgG horse radish peroxidase conjugated, from Agrisera, [AS09 602](#)) diluted to 1:20 000 in 1% milk/TTBS for 2h at RT with agitation. The blot was washed 3x5 min in TTBS and 1x5 min in TBS at RT with agitation and developed for 5 min with ECL according to the manufacturer's instructions.

Courtesy Msc. Lauri Nikkanen, University of Turku, Finland