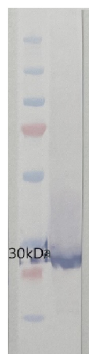


Product no **AS22 4825****RbcS | Ribulose-1,5-bisphosphate carboxylase/oxygenase small subunit (Algal)****Product information**

Immunogen	KLH-conjugated peptide derived from <i>Chlamydomonas reinhardtii</i> RbcS, UniProt: P00873 , P08475 , Q31NB2
Host	Rabbit
Clonality	Polyclonal
Purity	Antigen affinity purified serum, in PBS pH 7.4
Format	Lyophilized
Quantity	50 µg
Reconstitution	For reconstitution, add 50 µl, of sterile or deionized water.
Storage	Store lyophilized/reconstituted at -20°C; once reconstituted make aliquots to avoid repeated freeze-thaw cycles. Please, remember to spin tubes briefly prior to opening them to avoid any losses that might occur from lyophilized material adhering to the cap or sides of the tubes.

Application information

Recommended dilution	1 : 1000 (WB)
Expected apparent MW	20 15 kDa
Confirmed reactivity	<i>Chlamydomonas reinhardtii</i> , <i>Synechococcus</i> sp. PCC7002
Predicted reactivity	Species of your interest not listed? Contact us
Not reactive in	No confirmed exceptions from predicted reactivity are currently known
Selected references	To be added when available, antibody available in October 2023.



5 µg of total protein from *C.reinhardtii*, was denatured with Invitrogen LDS sample buffer (4X) at 70°C/5 min. Samples were separated on Invitrogen NuPage Bis-Tris 4-12% SDS-PAGE 60 min and blotted for 1 h to Invitrogen PVDF (pore size of 0.45 µm), using: wet transfer. Blot was blocked with 5% milk in TBS-T for: 1h/RT with agitation. Blot was incubated in the primary antibody at a dilution of 1: 1000 for 1h/RT with TBS-T Blocking. The antibody solution was decanted, and the blot was rinsed briefly twice, then washed once for 10 min and 2 times for 5 min in TBS-T at RT with agitation. Blot was incubated in matching secondary antibody (anti-rabbit IgG ALP conjugated, [AS09 607](#) lot 2302) diluted to 1: 5 000 in TBS-T Blocking for 0,5h/RT with agitation. The blot was washed as above and developed with [AS19 BCIP-NBT](#) lot 03068231 for 30 seconds. Image was captured after 1h.