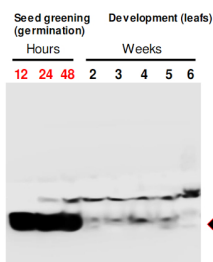


Product no **AS15 2835****Anti-RIQ1 | Reduced induction of non-photochemical quenching 1****Product information**

Immunogen	KLH-conjugated peptide, derived from <i>Arabidopsis thaliana</i> RIQ1, UniProt: Q8VYV1 , TAIR: AT5G08050
Host	Rabbit
Clonality	Polyclonal
Purity	Immunogen affinity purified serum in PBS pH 7.4.
Format	Lyophilized
Quantity	50 µg
Reconstitution	For reconstitution add 50 µl of sterile water
Storage	Store lyophilized/reconstituted at -20°C; once reconstituted make aliquots to avoid repeated freeze-thaw cycles. Please remember to spin the tubes briefly prior to opening them to avoid any losses that might occur from material adhering to the cap or sides of the tube.

Application information

Recommended dilution	1 : 1000 (WB)
Expected apparent MW	16 16 kDa (without transit peptide 10.02 kDa)
Confirmed reactivity	<i>Arabidopsis thaliana</i>
Predicted reactivity	Higher plants
	Species of your interest not listed? Contact us
Not reactive in	Cyanobacteria

Application example

10 µg of total protein from *Arabidopsis thaliana* greening seeds under germination, were extracted and separated on 12 % SDS-PAGE and blotted 1h to nitrocellulose membrane using tank transfer. Blots were blocked with 10% Milk for 1h at room temperature (RT) with agitation. Blot was incubated in the primary antibody at a dilution of 1: 1 000 overnight with agitation. The antibody solution was decanted and the blot was rinsed briefly twice, then washed three times for 15 min in TBS-T at RT with agitation. Blot was incubated in secondary antibody (anti-rabbit IgG horseradish peroxidase conjugated, [AS09 602](#) from Agrisera) diluted to 1:10 000 in TTBS for 1h at RT. The blot was washed as above and developed for 5 min with ECL according to the manufacturer's instructions. Exposure time was 1 minute.

Courtesy of Dr. Rikard Fristedt VU University Amsterdam, The Netherlands