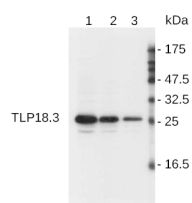


Product no **AS08 369****Anti-Tlp18,3 | Thylakoid lumen 18,3 kDa protein****Product information**

| | |
|-----------------------|--|
| Immunogen | synthetic peptides amino acids 227-241 and amino acids 242-256 from <i>Arabidopsis thaliana</i> Tlp18.3 protein sequence TAIR: At1g54780) |
| Host | Rabbit |
| Clonality | Polyclonal |
| Purity | Serum |
| Format | Lyophilized |
| Quantity | 50 µl |
| Reconstitution | For reconstitution add 50 µl of sterile water |
| Storage | Store lyophilized/reconstituted at -20 °C; once reconstituted make aliquots to avoid repeated freeze-thaw cycles. Please remember to spin the tubes briefly prior to opening them to avoid any losses that might occur from material adhering to the cap or sides of the tube. |

Application information

| | |
|-------------------------------|--|
| Recommended dilution | 1 : 1000 (WB) |
| Expected apparent MW | 22 18.5 kDa (<i>A. thaliana</i>) |
| Confirmed reactivity | <i>Arabidopsis thaliana</i> |
| Predicted reactivity | <i>Oryza sativa</i> , <i>Ricinus communis</i> , <i>Zea mays</i> Species of your interest not listed? Contact us |
| Not reactive in | No confirmed exceptions from predicted reactivity are currently known |
| Additional information | Application note: in a gel without urea Tlp18,3 will run at 18 kDa, while in a gel with urea it runs at 25 kDa |
| Selected references | Zienkiewicz et al. (2013) . Light intensity and quality stimulated Deg1-dependent cleavage of PSII components in the chloroplasts of maize. <i>Plan Physiol Biochem.</i> March 16. |

Application example

4, 2, and 1 µg chl/lane (from left to right) of **chloroplast** prepared from *Arabidopsis thaliana* were separated on a **15% gel with 6M urea** and blotted to **PVDF**. Filters were blocked (1h) with 5% milk powder and incubated with anti-Tlp18.3 antibody (**1: 1000**, 1h) followed by incubation with secondary HRP-coupled anti-rabbit antibody (**1: 10 000**, 1h). Signal was detected with chemiluminescence.