

Agrisera

This product is **for research use only** (not for diagnostic or therapeutic use)

contact: support@agrisera.com

Agrisera AB | Box 57 | SE-91121 Vännäs | Sweden | +46 (0)935 33 000 | www.agrisera.com

Product no **AS13 2687**

AGRP | agouti related protein

Product information

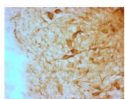
Background	AGRP is the endogenous antagonist of alpha-melanocyte stimulating hormone and has been shown to cause potent stimulation of food intake, and this protein is found in over 90% of Neuropeptide Y containing cells in rats.
Immunogen	A synthetic peptide corresponding to a region within the carboxy domain of mouse agouti related protein. This peptide was conjugated to carrier protein to enhance the immunological response.
Host	Guinea pig
Clonality	Polyclonal
Purity	Serum
Format	Lyophilized
Quantity	50 µl
Reconstitution	For reconstitution add 50 µl of sterile water.
Storage	For long term stability requires storage, preferably in small aliquots at -20°C or lower. It is recommended that a thawed sample is stored at 4°C for no longer than 2 weeks. Allocation of appropriate anti-bacterial agent can increase shelf life by several weeks. Diluted serum should be prepared as required. Glycerol (1:1) can be added to neat serum for additional stability if intended use does not prevent this.
Tested applications	Immunohistochemistry (IHC)

Application information

Recommended dilution	1 : 1000-1 : 2000 (IHC). IHC performed in sheep brain (hypothalamus) demonstrates intense staining of cells and terminals. No staining is evident when the primary antibody is pre-absorbed with 0.5 mg/ml of AGRP. Optimal dilutions/concentrations should be determined by the end user.
Confirmed reactivity	Sheep
Predicted reactivity	Other species have not yet been tested.

For high resolution images, please visit the specific product page at www.agrisera.com

Application example



The 4% PFA fixed, frozen cryostat section of the sheep hypothalamus was incubated in guinea pig polyclonal antibodies to the mouse AGRP protein at the dilution of 1:1000 overnight followed by incubation with biotinylated secondary antibodies. Cell bodies and nerve terminals in the sheep brain are intensely stained. This figure shows staining of cells when no pre-absorption is performed.

||| For applications or usage on species others than stated as confirmed above Agrisera offers a payment-after-testing option. To learn more about this or for any questions on this product, please use the LiveChat option in the left menu bar or contact us at [\[email protected\]](mailto:support@agrisera.com)