

Product no **AS05 074**

GDC-H | H protein of glycine decarboxylase complex (GDC)

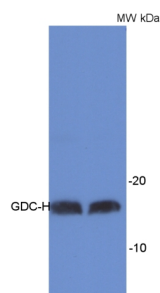
Product information

Immunogen	purified GDC-H protein from <i>Spinacia oleracea</i>
Host	Rabbit
Clonality	Polyclonal
Purity	Total IgG
Format	Lyophilized in PBS pH 7.4
Quantity	200 µg
Reconstitution	For reconstitution add 200 µl of sterile water.
Storage	Store lyophilized/reconstituted at -20°C; once reconstituted make aliquots to avoid repeated freeze-thaw cycles. Please, remember to spin tubes briefly prior to opening them to avoid any losses that might occur from lyophilized material adhering to the cap or sides of the tubes.
Additional information	Cellular [compartment marker] of mitochondrial matrix

Application information

Recommended dilution	1 : 5 000 (TP), (WB)
Expected apparent MW	16 kDa
Confirmed reactivity	<i>Arabidopsis thaliana</i> , <i>Petunia hybrida</i> cv. Mitchell, <i>Portulaca grandiflora</i> , <i>Spinacia oleracea</i> , <i>Triticum aestivum</i> , <i>Vicia faba</i>
Predicted reactivity	higher plants
Not reactive in	No confirmed exceptions from predicted reactivity are currently known.
Additional information	This antibody can be used on total cell extract of <i>Arabidopsis thaliana</i> . For high resolution images, please visit the specific product page at www.agrisera.com
Selected references	<p>Guralnick et al. (2020). The Development of Crassulacean Acid Metabolism (CAM) Photosynthesis in Cotyledons of the C4 Species, <i>Portulaca grandiflora</i> (Portulacaceae). <i>Plants</i> (Basel). 2020 Jan 2;9(1). pii: E55. doi: 10.3390/plants9010055. (tissue printing)</p> <p>Réthoré et al. (2019). <i>Arabidopsis</i> seedlings display a remarkable resilience under severe mineral starvation using their metabolic plasticity to remain self-sufficient for weeks. <i>Plant J.</i> 2019 Mar 22. doi: 10.1111/tpj.14325.</p> <p>Lynch et al. (2017). Multifaceted plant responses to circumvent Phe hyperaccumulation by downregulation of flux through the shikimate pathway and by vacuolar Phe sequestration. <i>Plant J.</i> 2017 Dec;92(5):939-950. doi: 10.1111/tpj.13730. (<i>Petunia hybrida</i> cv. Mitchell)</p> <p>Bancel et al. (2015). Proteomic Approach to Identify Nuclear Proteins in Wheat Grain. <i>J Proteome Res.</i> 2015 Sep 8.</p> <p>Long et al. (2015). Contributions of photosynthetic and non-photosynthetic cell types to leaf respiration in <i>Vicia faba</i> L. and their responses to growth temperature. <i>Plant Cell Environ.</i> 2015 Apr 1. doi: 10.1111/pce.12544.</p> <p>Córdoba-Cañero et al. (2011). <i>Arabidopsis</i> ARP endonuclease functions in a branched base excision DNA repair pathway completed by LIG1. <i>The Plant J</i> in print</p>

Application example



15 µg of total protein from *Arabidopsis thaliana* leaf extract has been loaded per lane. Primary antibody has been used in 1: 5000 dilution using chemiluminescent detection.

Courtesy of Dr Olivier Keech, UPSC, Umeå, Sweden