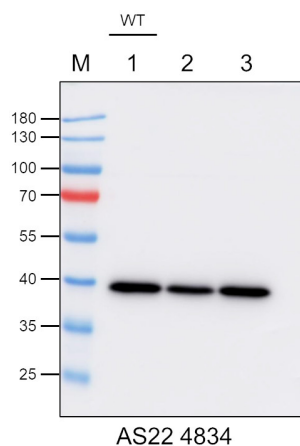


Product no **AS22 4834****Anti-PDH-E1 ALPHA | Pyruvate dehydrogenase E1 component subunit alpha-3, chloroplastic****Product information**

Immunogen	KLH-conjugated peptide derived from <i>Arabidopsis thaliana</i> PDH-E1 ALPHA protein sequence, UniProt: O24457 , TAIR: AT1G01090
Host	Rabbit
Clonality	Polyclonal
Purity	Antigen affinity purified serum, in PBS pH 7.4
Format	Lyophilized
Quantity	50 µg
Reconstitution	For reconstitution, add 50 µl, of sterile or deionized water.
Storage	Store lyophilized/reconstituted at -20°C; once reconstituted, make aliquots to avoid repeated freeze-thaw cycles. Please, remember to spin tubes briefly prior to opening them to avoid any losses that might occur from lyophilized material adhering to the cap or sides of the tubes.

Application information

Recommended dilution	1 : 1000 - 1: 2000 (WB)
Expected apparent MW	47.2 44.2 kDa (due to N-terminal or C-terminal processing)
Confirmed reactivity	<i>Arabidopsis thaliana</i>
Predicted reactivity	<i>Brassica napus</i> , <i>Capsicum annuum</i> , <i>Nicotiana tabacum</i> , <i>Solanum lycopersicum</i> , <i>Solanum tuberosum</i> Species of your interest not listed? Contact us
Not reactive in	No confirmed exceptions from predicted reactivity are currently known
Selected references	To be added when available, antibody available in December 2025.

**Samples:**

- 1 - 40 µg of *Arabidopsis thaliana* Col-0 whole leaf extract.
 - 2 - 40 µg of *Arabidopsis thaliana* mutant iar4l-1 (AT1G59900), *Arabidopsis thaliana* mitochondrial pyruvate dehydrogenase E1a subunit.
 - 3 - 40 µg of *Arabidopsis thaliana* mutant SALK_004367C (AT5G50850), *Arabidopsis thaliana* mitochondrial pyruvate dehydrogenase E1 component subunit beta-1.
- M: MW markers

40 µg/well of total protein extracted freshly from *Arabidopsis thaliana* whole rosette leaves. Exact buffer components were: 50 mM Tris-HCl (pH 7.5), 150 mM NaCl, 0.5 mM EDTA, 10% (v/v) glycerol, 1% (v/v) Nonidet P-40 (NP-40), 1% (w/v) deoxycholate, 0.1% (w/v) SDS, 1 × cComplete protease inhibitor cocktail (Roche), 1 mM PMSF, and denatured with 5xSDS sample buffer (300 mM Tris-HCl (pH 6.8), 10% SDS, 0.1% Bromophenol, 50% Glycerol, 500 mM DTT) at 95°C/5 min. Samples were separated in the RT on 10% SDS-PAGE and blotted for 7 min to nitrocellulose (pore size of 0.2 µm), using: iBlotTM Dry Blotting System (Invitrogen) in the RT. Blot was blocked with 5% milk 5 for: 3h/RT with agitation. Blot was incubated in the primary antibody at a dilution of 1: 2000 for ON/4°C with agitation in 2% milk. The antibody solution was

Agrisera

Part of Thermo Fisher Scientific

This product is **for research use only** (not for diagnostic or therapeutic use)

contact: support@agrisera.com

Agrisera AB | Box 57 | SE-91121 Vännäs | Sweden | +46 (0)935 33 000 | www.agrisera.com

decanted and the blot was rinsed briefly twice, then washed 5 times for 5 min in PBS-T at RT with agitation. Blot was incubated in matching secondary antibody (anti-rabbit IgG horse radish peroxidase conjugated) diluted to 1 : 5000 in 2% milk for 1h/RT with agitation. The blot was washed as above and developed with a following chemiluminescent detection reagent: AS16 ECL-N-10 Agrisera Bright. Exposure time was 5 seconds.