

# Agrisera

This product is for research use only (not for diagnostic or therapeutic use)

contact: [support@agrisera.com](mailto:support@agrisera.com)

Agrisera AB | Box 57 | SE-91121 Vännäs | Sweden | +46 (0)935 33 000 | [www.agrisera.com](http://www.agrisera.com)

Product no **AS13 2696**  
**TH | Tyrosine Hydroxylase**

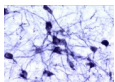
## Product information

|                       |   |
|-----------------------|---|
| <b>Immunogen</b>      | A synthetic peptide as part of human Tyrosine Hydroxylase conjugated to KLH. The peptide is homologous with the corresponding sequence derived from TH protein in rat.  |
| <b>Host</b>           | Rabbit  |
| <b>Clonality</b>      | Polyclonal  |
| <b>Purity</b>         | Serum   |
| <b>Format</b>         | Lyophilized   |
| <b>Quantity</b>       | 100 µl  |
| <b>Reconstitution</b> | For reconstitution add 100 µl of sterile water.   |
| <b>Storage</b>        | After reconstitution keep aliquots at -20°C for a higher stability, and at 4°C with an appropriate antibacterial agent. Glycerol (1:1) may be added for an additional stability. Avoid repetitive freeze/thaw cycles. |

## Application information

|                             |   |
|-----------------------------|---|
| <b>Recommended dilution</b> | 1 : 2000-1 : 5000. This is a superb antibody for detection of tyrosine hydroxylase containing neurons exhibiting an intense labelling with a negligible background. This antiserum has proven extremely useful for staining of catecholaminergic neurons. It stains nicely and intensely dendritic processes and fine nerve terminals. We recommend mouse or rat brain containing catecholaminergic neurons as a positive control for this antibody, for example brain stem or striatum. Optimal dilutions/concentrations should be determined by the end user. |
| <b>Confirmed reactivity</b> | Rat, Mouse and guinea pig   |

### Application example



Immunohistochemical staining of catecholaminergic neurons in the rat brain stem.