

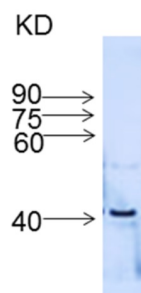
Product no **AS16 3847****Anti-IFR | isoflavone reductase****Product information**

Anti-IFR | isoflavone reductase

Immunogen	KLH-conjugated peptide derived from <i>Oryza sativa</i> UniProt: Q9FTN5 , LOC_Os01g01660.1
Host	Rabbit
Clonality	Polyclonal
Purity	Serum
Format	Lyophilized
Quantity	50 µl
Reconstitution	For reconstitution add 100 µl of sterile water
Storage	The antibody may be stored at -20°C for one year in its original formulation. Additionally, antibody may be stored at 2°C to 8°C for up to 1 month without detectable loss of activity. Avoid repeated freeze-thaw cycles of the diluted antibody.

Application information

Recommended dilution	1 : 500 (WB)
Expected apparent MW	33 40 kDa
Confirmed reactivity	<i>Oryza sativa</i>
Predicted reactivity	<i>Oryza sativa</i>
Not reactive in	No confirmed exceptions from predicted reactivity are currently known

Application example

50-100 µg of total protein from *Oryza sativa* cv. 9311 flag leaf at maturing stage, extracted with protein extraction reagent were separated on 15% SDS-PAGE and blotted 1h to PVDF using wet transfer. Blots were blocked with 1×TBST+5% Nonfat dry milk for 1h at 37°C with agitation. Blot was incubated in the primary antibody at a dilution of 1: 500 in 1×TBST+5% Nonfat dry milk for 1h at RT with agitation. The antibody solution was decanted and the blot was rinsed briefly twice, then washed once for 15 min and 3 times for 5 min in TBS-T at RT with agitation. Blot was incubated in secondary antibody (anti-rabbit IgG horse radish peroxidase conjugated) diluted to 1:15 000 in 1x TBST + 5% Nonfat dry milk for 2h at RT with agitation. The blot was washed as above and developed for 5 min with ECL according to the manufacturer's instructions. Exposure time was 10-20 seconds.