

# Agrisera

This product is for research use only (not for diagnostic or therapeutic use)

contact: [support@agrisera.com](mailto:support@agrisera.com)

Agrisera AB | Box 57 | SE-91121 Vännäs | Sweden | +46 (0)935 33 000 | [www.agrisera.com](http://www.agrisera.com)

Product no **AS18 4191**

## Pectic polysaccharide, homogalacturonan (monoclonal, clone LM19)

### Product information

**Immunogen** | Pectic polysaccharide, Homogalacturonan.

**Host** | Rat

**Clonality** | Monoclonal

**Subclass/isotype** | IgM

**Format** | Cell Culture Supernatant

**Quantity** | 5 ml

**Storage** | Store at +4 °C (short term) and at -20 °C (long term).

Make aliquots to avoid repeated freeze-thaw cycles. Please, remember to spin tubes briefly prior to opening them to avoid any losses that might occur from any material adhering to the cap or sides of the tubes.

**Additional information** | Contains 0.05% Sodium Azide.

Has no known cross-reactivity with other polymers.  
Binds to unesterified homogalacturonan.

The antibody recognizes a range of homogalacturonan samples but binds strongly to un-esterified homogalacturonan.

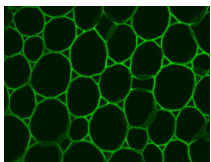
### Application information

**Recommended dilution** | 1:10 (ELISA, IF)

**Confirmed reactivity** | Higher plants, ferns and mosses

**Not reactive in** | No confirmed exceptions from predicted reactivity known at the moment.

**Selected references** | [Marcus et al. \(2010\)](#). Restricted access of proteins to mannan polysaccharides in intact plant cell walls. *Plant J.* 2010 Oct;64(2):191-203.doi: 0.1111/j.1365-313X.2010.04319.x.  
[Verherbruggen et al. \(2009\)](#). An extended set of monoclonal antibodies to pectic homogalacturonan. *Carbohydr Res.* 2009 Sep 28;344(14):1858-62.doi: 10.1016/j.carres.2008.11.010.



Immunofluorescence method described in:

[An extended set of monoclonal antibodies to pectic homogalacturonan](#). Yves Verherbruggen, Susan E. Marcus, Ash Haeger, José J. Ordaz-Ortiz, J. Paul Knox, *Carbohydrate research* 344 (2009) 1858-1862.