

Product no **AS18 4205-1ml**

Anti-Xyloglucan (monoclonal, clone LM25)

Product information

Immunogen	Neoglycoprotein, Xyloglucan
Host	Rat
Clonality	Monoclonal
Subclass/isotype	IgM
Purity	Cell culture supernatant.
Format	Liquid
Quantity	1 ml
Storage	Store at +4°C (short term) and at -20°C (long term).

Additional information | Contains 0,05% Sodium Azide

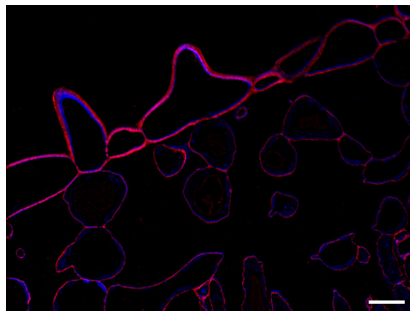
Application information

Recommended dilution | 1:10 (ELISA, IF)

Confirmed reactivity | Higher plants, ferns and mosses

Not reactive in | No confirmed exceptions from predicted reactivity are currently known

Selected references | [Albornos et al. \(2025\)](#). Reduction of galactose side chains in type II arabinogalactan alters homogalacturonan methyl esterification in Arabidopsis thaliana seed coat mucilage. *Planta*. 2025 May 24;262(1):4. doi: 10.1007/s00425-025-04717-x.
[Pedersen et al. \(2012\)](#). Versatile high resolution oligosaccharide microarrays for plant glycobiology and cell wall research. *J Biol Chem*. 2012 Nov 6;287(47):39429-38. doi: 10.1074/jbc.M112.396598.



Material: Cassava leaf, epidermal layer

Fixation: aldehyde, embedded in HM20 resin, thin sectioned

Blocking: 4% milk in PBS

Primary antibody: Anti-xyloglucan, LM25 (AS18 4205-1ml)

Secondary antibody (Agrisera): Donkey anti-Rat IgG (H&L), DyLight® 594 conjugated, [AS12 2090](#) (red)

Counterstained with Calcofluor White (blue). Super-resolution images were acquired on a ZEISS Elyra7 in Lattice Structured Illumination Microscopy mode.

Courtesy Dr. Kirk Czymmek, Donald Danforth Plant Science Center, USA