

# Agrisera

This product is for research use only (not for diagnostic or therapeutic use)

contact: [support@agrisera.com](mailto:support@agrisera.com)

Agrisera AB | Box 57 | SE-91121 Vännäs | Sweden | +46 (0)935 33 000 | [www.agrisera.com](http://www.agrisera.com)

Product no **AS09 615**

## BiP | Lumenal-binding protein (goat antibody)

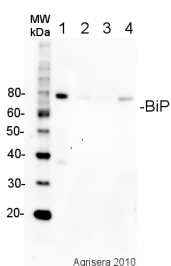
### Product information

<b>Immunogen</b>	KLH-conjugated synthetic peptide derived from <i>Arabidopsis thaliana</i> BiP proteins: BiP1 UniProt: <a href="#">Q9LKR3</a> , TAIR: <a href="#">At5g28540</a> , BiP2 UniProt: <a href="#">F4K007</a> , TAIR: <a href="#">At5g42020</a> , BiP3 UniProt: <a href="#">Q8H1B3</a> , TAIR: <a href="#">At1g09080</a>
<b>Host</b>	Goat
<b>Clonality</b>	Polyclonal
<b>Purity</b>	Affinity purified serum in PBS, pH 7.4
<b>Format</b>	Lyophilized
<b>Quantity</b>	100 µg
<b>Reconstitution</b>	For reconstitution add 100 µl of sterile water.
<b>Storage</b>	Store lyophilized/reconstituted at -20 °C; once reconstituted make aliquots to avoid repeated freeze-thaw cycles. Please, remember to spin tubes briefly prior to opening them to avoid any losses that might occur from lyophilized material adhering to the cap or sides of the tubes.

### Application information

<b>Recommended dilution</b>	1 : 2000 (WB)
<b>Expected   apparent MW</b>	73.5   80 kDa
<b>Confirmed reactivity</b>	<i>Arabidopsis thaliana</i> , <i>Hordeum vulgare</i> , <i>Spinacia oleracea</i> , <i>Zea mays</i>
<b>Predicted reactivity</b>	<i>Hordeum vulgare</i> , <i>Nicotiana tabacum</i> , <i>Oryza sativa</i> , <i>Picea sitchensis</i> , <i>Populus trichocarpa</i> , <i>Physcomitrella patens</i> , <i>Spinacia oleracea</i> , <i>Zea mays</i> Species of your interest not listed? <a href="#">Contact us</a>
<b>Not reactive in</b>	No confirmed exceptions from predicted reactivity are currently known.
<b>Additional information</b>	Protein or membrane sample should be treated at 70 °C for 10 min before loading on the gel. Antibody has a reduced reactivity to monocots in western blot. For high resolution images, please visit the specific product page at <a href="http://www.agrisera.com">www.agrisera.com</a>
<b>Selected references</b>	<a href="#">Narusaka</a> et al (2016). Leucine zipper motif in RRS1 is crucial for the regulation of Arabidopsis dual resistance protein complex RPS4/RRS1. Sci Rep. 2016 Jan 11;6:18702. doi: 10.1038/srep18702.

### Application example



# Agrisera

This product is **for research use only** (not for diagnostic or therapeutic use)

contact: [support@agrisera.com](mailto:support@agrisera.com)

Agrisera AB | Box 57 | SE-91121 Vännäs | Sweden | +46 (0)935 33 000 | [www.agrisera.com](http://www.agrisera.com)

5 µg of total protein from *A.thaliana* (1), *H. vulgare* (2), *Z.mays* (3), *S. oleracea* (4), extracted with Agrisera PEB extraction buffer ([AS08 300](#)) were separated on **4-12% SDS-PAGE** and blotted 1h to **PVDF**. Blots were blocked immediately following transfer in for 1h at room temperature with agitation. Blots were incubated in the primary antibody at a dilution of 1: 10 000 for 1h at room temperature with agitation. The antibody solution was decanted and the blot was rinsed briefly twice, then washed once for 15 min and 3 times for 5 min in TBS-T at room temperature with agitation. Blots were incubated in secondary antibody (anti-goat IgG horse radish peroxidase conjugated, from Agrisera [AS09 605](#)) diluted to 1:50 000 for 1h at room temperature with agitation. The blots were washed as above and developed for 5 min with ECL detection reagent according to the manufacturers instructions. Exposure time was 5 seconds.