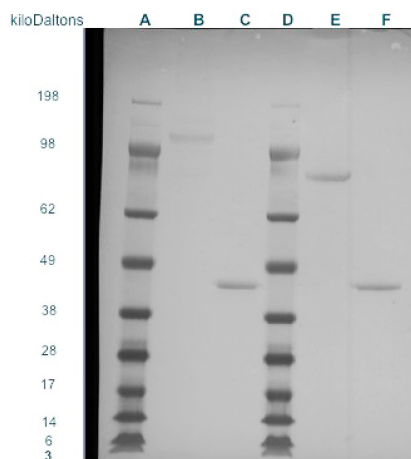


Product no **AS20 4465****Anti-BoNT-A | Botulinum Neurotoxin A (Heavy Chain Binding Domain)****Product information**

Immunogen	Botulinum Neurotoxin Type A (Heavy Chain Binding Domain) isolated from <i>Clostridium botulinum</i> and purified.
Host	Chicken
Clonality	Polyclonal
Purity	Immunogen affinity purified in PBS pH 7.2. Contains 0.075% sodium azide.
Format	Liquid
Quantity	0.1 mg
Storage	Store at -20 °C; make aliquots to avoid repeated freeze-thaw cycles. Please remember to spin the tubes briefly prior to opening them to avoid any losses that might occur from material adhering to the cap or sides of the tube.

Application information

Recommended dilution	1:10 000 (ELISA), 1:2000 (WB)
Expected apparent MW	97 kDa
Confirmed reactivity	Botulinum toxin A heavy chain
Additional information	For direct ELISA coating with 2 µg of Botulinum Toxin A is recommended combined with primary antibody dilution of 1: 10 000. For Western blot 0.5 µg of non reduced holotoxin or heavy chains is recommended together with 1: 2000 dilution of a primary antibody.

**Samples:**

- A - MW standards
- B - Botulinum Neurotoxin Type A, 1 µg
- C - Botulinum Neurotoxin Type A, Heavy Chain Binding Domain, 1 µg
- D - MW standards
- E - Botulinum Neurotoxin Type A, reduced, 1 µg
- F - Botulinum Neurotoxin Type A, Heavy Chain Binding Domain, reduced 1 µg

Samples were transferred to a PVDF membrane. Following blocking and washes, primary antibodies were applied in 1: 4000 dilution. Following incubation with a matching secondary antibody, the reaction was visualized using chemiluminescence according to manufacture's recommendation.