

# Agrisera

This product is for research use only (not for diagnostic or therapeutic use)

contact: [support@agrisera.com](mailto:support@agrisera.com)

Agrisera AB | Box 57 | SE-91121 Vännäs | Sweden | +46 (0)935 33 000 | [www.agrisera.com](http://www.agrisera.com)

Product no **AS14 2824**

## PsbO1 | 33 kDa of the oxygen evolving complex (OEC) of PSII

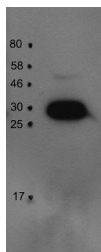
### Product information

<b>Immunogen</b>	KLH-conjugated peptide chosen chosen from <i>Arabidopsis thaliana</i> PsbO1, UniProt: <a href="#">P23321</a> , TAIR: <a href="#">At5g66570</a>
<b>Host</b>	Rabbit
<b>Clonality</b>	Polyclonal
<b>Purity</b>	Serum
<b>Format</b>	Lyophilized
<b>Quantity</b>	50 µl
<b>Reconstitution</b>	For reconstitution add 50 µl of sterile water.
<b>Storage</b>	Store lyophilized/reconstituted at -20°C; once reconstituted make aliquots to avoid repeated freeze-thaw cycles. Please, remember to spin tubes briefly prior to opening them to avoid any losses that might occur from lyophilized material adhering to the cap or sides of the tubes.

### Application information

<b>Recommended dilution</b>	1 : 1000 (WB)
<b>Expected   apparent MW</b>	33   30 kDa
<b>Confirmed reactivity</b>	<i>Arabidopsis thaliana</i>
<b>Predicted reactivity</b>	<i>Brassica napus</i> , <i>Capsella rubella</i> , <i>Triticum aestivum</i> Species of your interest not listed? <a href="#">Contact us</a>
<b>Not reactive in</b>	<i>Oryza sativa</i>
<b>Additional information</b>	This antibody is specific to PsbO1 and does not react with PsbO2 as confirmed on a deletion mutant. For high resolution images, please visit the specific product page at <a href="http://www.agrisera.com">www.agrisera.com</a>
<b>Selected references</b>	<a href="#">Shanmugabalaji et al. (2018)</a> . Chloroplast Biogenesis Controlled by DELLA-TOC159 Interaction in Early Plant Development. <i>Curr Biol.</i> 2018 Aug 20;28(16):2616-2623.e5. doi: 10.1016/j.cub.2018.06.006.

#### application example



30 µg of thylakoid protein from *Arabidopsis thaliana* Columbia-0 extracted with 330 mM sorbitol, 50 mM Hepes-KOH (pH 7.8) were separated on 15% SDS-PAGE and blotted 1h to PVDF using semi-dry transfer. Blots were blocked with 5% milk for 1h at room temperature (RT) with agitation. Blot was incubated in the primary antibody at a dilution of 1: 1 000 for 6h at 4°C with agitation. The antibody solution was decanted and the blot was rinsed briefly twice, then washed once for 15 min and 3 times for 5 min in TBS-T at RT with agitation. Blot was incubated in secondary antibody (anti-rabbit IgG horse radish peroxidase conjugated) diluted to 1:10 000 in 1% milk (TBS-T) for 2h at 4°C with agitation. The blot was washed as above and developed for 5 min with ECL according to the manufacturer's instructions. Exposure time was 60 seconds.

# Agrisera

This product is **for research use only** (not for diagnostic or therapeutic use)

contact: [support@agrisera.com](mailto:support@agrisera.com)

Agrisera AB | Box 57 | SE-91121 Vännäs | Sweden | +46 (0)935 33 000 | [www.agrisera.com](http://www.agrisera.com)

Courtesy of Dr. Peter Gollan, University of Turku, Finland