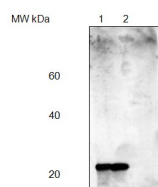


**Product no AS08 305****Anti-PsbP | 23 kDa protein of the oxygen evolving complex (OEC) of PSII (anti-monocot protein)****Product information**

<b>Immunogen</b>	Recombinant sorghum OE23 protein
<b>Host</b>	Rabbit
<b>Clonality</b>	Polyclonal
<b>Purity</b>	Serum
<b>Format</b>	Lyophilized
<b>Quantity</b>	100 µl
<b>Reconstitution</b>	For reconstitution add 100 µl of sterile water
<b>Storage</b>	Store lyophilized/reconstituted at -20°C; once reconstituted make aliquots to avoid repeated freeze-thaw cycles. Please remember to spin the tubes briefly prior to opening them to avoid any losses that might occur from material adhering to the cap or sides of the tube.

**Application information**

<b>Recommended dilution</b>	1 : 5 000 (WB)
<b>Expected   apparent MW</b>	23 kDa
<b>Confirmed reactivity</b>	<i>Arabidopsis thaliana</i> , <i>Sorghum bicolor</i> , <i>Zea mays</i>
<b>Predicted reactivity</b>	<i>Hordeum vulgare</i> , <i>Oryza sativa</i> Species of your interest not listed? <a href="#">Contact us</a>
<b>Not reactive in</b>	No confirmed exceptions from predicted reactivity are currently known

**Application example**

**5 µg** of total protein from (1) *Arabidopsis thaliana* total leaf extract; (2) *Zea mays* total leaf extract were separated in a **12% or 5-15%** gradient gel following by transfer to **nitrocellulose membrane**. Membrane was blocked with **TBST + 4% non-fat dried milk, 20 min** following by three washes in TBST. Incubation time with primary and secondary antibodies was 1 hr primary, 30 min for secondary antibodies. Detection was performed using chemiluminescence.