

Agrisera

This product is for research use only (not for diagnostic or therapeutic use)

contact: support@agrisera.com

Agrisera AB | Box 57 | SE-91121 Vännäs | Sweden | +46 (0)935 33 000 | www.agrisera.com

Product no **AS16 3982** **2b protein [Tomato aspermy virus]**

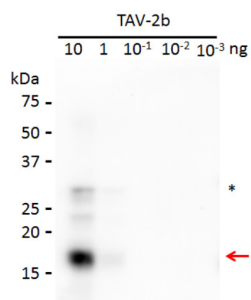
Product information

Immunogen	Recombinant 2b protein [Tomato aspermy virus] Protein accession number: NP_620826 .
Host	Rabbit
Clonality	Polyclonal
Purity	Serum
Format	Lyophilized
Quantity	50 µl
Reconstitution	For reconstitution add 50 µl of sterile water.
Storage	Store lyophilized/reconstituted at -20°C; once reconstituted make aliquots to avoid repeated freeze-thaw cycles. Please, remember to spin tubes briefly prior to opening them to avoid any losses that might occur from lyophilized material adhering to the cap or sides of the tubes.

Application information

Recommended dilution	1 : 5000 (WB)
Expected apparent MW	11.2 17 kDa
Confirmed reactivity	2b protein [Tomato aspermy virus].
Not reactive in	No confirmed exceptions from predicted reactivity are currently known.

Application example



The indicated amounts of the untagged recombinant proteins (extracted in 2 x SDS buffer (0.125M Tris pH 6.8, 4% (w/v) SDS, 20%(v/v) glycerol, 0.2M DTT, 0.02% bromophenol blue)) was separated on 15% SDS-PAGE and blotted 1h to PVDF membrane. Filters were blocked 1h with 5% low-fat milk powder in PBS-T (1 X PBS buffer; 0.5% TWEEN20) and probed with the serum of anti-FNY 2b antibody (1:5 000, 1h) and secondary anti-rabbit (1:5000, 1 h) antibody (HRP conjugated) in PBS-T containing 5% low fat milk powder. Antibody incubations were followed by washings in PBS-T. All steps were performed at RT with agitation. Blots were developed for 5 min with ECL-Prime detection reagent according the manufacturer's instructions. Exposure time was 20 seconds.

Courtesy of Dr. Xiuren Zhang, Texas A&M University, USA