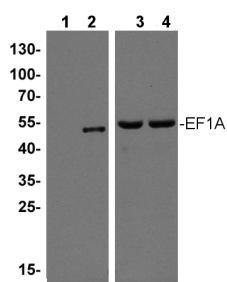


Product no **AS11 1633****Anti-EF1A | Elongation factor 1-alpha / EF-1-alpha****Product information**

Immunogen	Full-length, recombinant EF1A of <i>Arabidopsis thaliana</i> UniProt: P0DH99-1 , TAIR: AT1G07940
Host	Rabbit
Clonality	Polyclonal
Purity	Serum
Format	Lyophilized
Quantity	200 µl
Reconstitution	For reconstitution add 200 µl of sterile water
Storage	Store lyophilized/reconstituted at -20 °C; once reconstituted make aliquots to avoid repeated freeze-thaw cycles. Please remember to spin the tubes briefly prior to opening them to avoid any losses that might occur from material adhering to the cap or sides of the tube.

Application information

Recommended dilution	1 : 1000 (WB)
Expected apparent MW	49.5 kDa
Confirmed reactivity	<i>Arabidopsis thaliana</i> , <i>Oryza sativa</i> , <i>Triticum aestivum</i>
Predicted reactivity	<i>Citrus sinensis</i> , <i>Brassica napus</i> , <i>Nicotiana benthamiana</i> , <i>Nicotiana tabacum</i> , <i>Picea sitchensis</i> , <i>Populus trichocarpa</i> , <i>Solanum lycopersicum</i> , <i>Solanum tuberosum</i> , <i>Sorghum bicolor</i> , <i>Zea mays</i>
	Species of your interest not listed? Contact us
Not reactive in	<i>Chlamydomonas reinhardtii</i> , Recombinant wheat EF1A
Selected references	<p>Huang et al. (2025). Aptamer mediated modulation of eEF1 enhances salt stress tolerance in rice. BMC Plant Biol. 2025 Jul 2;25(1):800. doi: 10.1186/s12870-025-06896-x.</p> <p>Markovic et al. (2021) Correlation of elongation factor 1A accumulation with photosynthetic pigment content and yield in winter wheat varieties under heat stress conditions, Plant Physiology and Biochemistry, Volume 166,2021,Pages 572-581 , ISSN 0981-9428, https://doi.org/10.1016/j.plaphy.2021.06.035. (https://www.sciencedirect.com/science/article/pii/S098194282100348X)</p> <p>Djukic et al. (2019). Resolving subcellular plant metabolism. Plant J. 2019 Jul 30. doi: 10.1111/tpj.14472.</p> <p>Zhen et al. (2018). 2D-DIGE comparative proteomic analysis of developing wheat grains under high-nitrogen fertilization revealed key differentially accumulated proteins that promote storage protein and starch biosyntheses. Anal Bioanal Chem. 2018 Jul 30. doi: 10.1007/s00216-018-1230-4.</p> <p>Wang et al. (2016). GOLGI TRANSPORT 1B Regulates Protein Export from the Endoplasmic Reticulum in Rice Endosperm Cells. Plant Cell. 2016 Nov;28(11):2850-2865. (<i>Oryza sativa</i>, western blot)</p>



10 µg total protein extracted from 15 day old *Arabidopsis thaliana* seedlings that were either kept at 22 °C (**3**) or heat treated at 38 °C for 2 hours prior to protein extraction (**4**). As positive control 10 ng of recombinant AtEF1A (**2**) were separated side by side with the plant samples on 10-15 % gradient SDS-PAGE and blotted to nitrocellulose (Bio-rad). Blots were blocked following transfer with 5% low fat milk in low salt buffer for 1h at room temperature with agitation. Blots were incubated in the primary antibody at a dilution of 1: 1000 for O/N 4 °C with agitation in the blocking solution. The primary antibody solution was removed and the blot was rinsed briefly twice, then washed 4 times for 15 min each at room temperature with agitation using low salt buffer. Blots were incubated in secondary antibody, anti-rabbit IgG horse radish peroxides conjugated, from Agrisera, [AS09 602](#), diluted to 1:35 000 for 1h at room temperature with agitation then washed as above and treated with ECL detection reagent according to the manufacturer's instructions. Exposure time was 5 seconds.

Agrisera

Part of Thermo Fisher Scientific

This product is **for research use only** (not for diagnostic or therapeutic use)

contact: support@agrisera.com

Agrisera AB | Box 57 | SE-91121 Vännäs | Sweden | +46 (0)935 33 000 | www.agrisera.com

Lane **(1)** with no signal: recombinant *Triticum* spp. EF1A.

Courtesy Dr. Eman Basha, Arizona State University