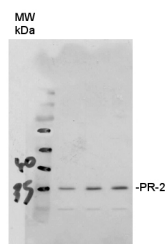


Product no **AS12 2366****Anti-PR-2 | Pathogenesis-related protein 2****Product information**

<b>Immunogen</b>	KLH-conjugated synthetic peptide derived from <i>Arabidopsis thaliana</i> PR-2 UniProt <a href="#">P33157</a> , TAIR <a href="#">AT3G57260</a>
<b>Host</b>	Rabbit
<b>Clonality</b>	Polyclonal
<b>Purity</b>	Serum
<b>Format</b>	Lyophilized
<b>Quantity</b>	50 µl
<b>Reconstitution</b>	For reconstitution add 50 µl of sterile water
<b>Storage</b>	Store lyophilized/reconstituted at -20°C; once reconstituted make aliquots to avoid repeated freeze-thaw cycles. Please remember to spin the tubes briefly prior to opening them to avoid any losses that might occur from material adhering to the cap or sides of the tube.

**Additional information** | This product can be sold containing Proclin if requested**Application information**

<b>Recommended dilution</b>	1 : 1000 (WB)
<b>Expected   apparent MW</b>	37.3 kDa (processing aa 1-30, mature peptide 34.1 kDa)
<b>Confirmed reactivity</b>	<i>Agostis stolonifera</i> cv. 'Penncross', <i>Arabidopsis thaliana</i> , <i>Glycine max</i> (roots)
<b>Predicted reactivity</b>	<i>Brassica juncea</i> , <i>Brassica oleracea</i> , <i>Citrus chinensis</i> , <i>Glycine max</i> , <i>Litchi chinensis</i> , <i>Manihot esculenta</i> , <i>Nicotiana tabacum</i>
	Species of your interest not listed? <a href="#">Contact us</a>
<b>Not reactive in</b>	No confirmed exceptions from predicted reactivity are currently known
<b>Additional information</b>	Does not cross-react with other 1,3-beta glucosidases
<b>Selected references</b>	<a href="#">Bernacki et al. (2024)</a> . METACASPASE8 (MC8) Is a Crucial Protein in the LSD1-Dependent Cell Death Pathway in Response to Ultraviolet Stress. <i>Int. J. Mol. Sci.</i> 2024, 25(6), 3195 <a href="#">Dong et al. (2020)</a> . Overexpression of BrAFP1 gene from winter rapeseed ( <i>Brassica rapa</i> ) confers cold tolerance in <i>Arabidopsis</i> . <i>Plant Physiol Biochem.</i> 2020 Jul 25;155:338-345. doi: 10.1016/j.plaphy.2020.07.011. <a href="#">Ly et al. (2019)</a> . Uncoupled Expression of Nuclear and Plastid Photosynthesis-Associated Genes Contributes to Cell Death in a Lesion Mimic Mutant. <i>Plant Cell.</i> 2019 Jan;31(1):210-230. doi: 10.1105/tpc.18.00813. <a href="#">Jespersen et al. (2017)</a> . Metabolic Effects of Acibenzolar-S-Methyl for Improving Heat or Drought Stress in Creeping Bentgrass. <i>Front Plant Sci.</i> 2017 Jul 11;8:1224. doi: 10.3389/fpls.2017.01224. eCollection 2017. (western blot, <i>Agostis stolonifera</i> cv. ?Penncross?) <a href="#">Kim et al. (2014)</a> . The <i>Arabidopsis</i> Immune Adaptor SRFR1 Interacts with TCP Transcription Factors that Redundantly Contribute to Effector-Triggered Immunity. <i>Plant J.</i> 2014 Apr 1. doi: 10.1111/tbj.12527.

**Application example**

10 µg of total protein from *Arabidopsis thaliana* mature leaves were extracted with 8M UREA and were separated on 12 % SDS-PAGE and blotted 1h to PVDF. Blots were blocked with 5% Milk in TBS-T 0,05% for 1h at room temperature (RT) with agitation. Blot was incubated in the primary antibody at a dilution of 1 : 1 000 for 1h at RT with agitation. The antibody solution was decanted and the blot was rinsed briefly twice, then washed once for 15 min and 3 times for 5 min in TBS-T at RT with agitation. Blot was incubated in secondary antibody (anti-rabbit IgG horse radish peroxidase conjugated, from Agrisera [AS09 602](#)) diluted to 1:10 000 in TBS-T/Milk 5% for 1h at RT with agitation. The blot was washed as above

# Agrisera

Part of Thermo Fisher Scientific

This product is **for research use only** (not for diagnostic or therapeutic use)

contact: [support@agrisera.com](mailto:support@agrisera.com)

Agrisera AB | Box 57 | SE-91121 Vännäs | Sweden | +46 (0)935 33 000 | [www.agrisera.com](http://www.agrisera.com)

and developed for 5 min with ECL according to the manufacturers instructions. Exposure time was seconds 60 seconds.

Courtesy of Louis-Valentin Meteignier, PhD student, University of Sherbrooke, Canada