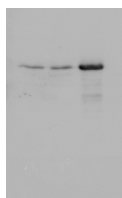


Product no **AS13 2673****Anti-MKKK18 | Mitogen-activated protein kinase 18****Product information**

Immunogen	KLH-conjugated synthetic peptide derived from known <i>Arabidopsis thaliana</i> kinase 18 sequence UniProt: Q9ZVP5 , TAIR: AT1G05100
Host	Rabbit
Clonality	Polyclonal
Purity	Serum
Format	Lyophilized
Quantity	50 µl
Reconstitution	For reconstitution add 50 µl of sterile water
Storage	Store lyophilized/reconstituted at -20°C; once reconstituted make aliquots to avoid repeated freeze-thaw cycles. Please remember to spin the tubes briefly prior to opening them to avoid any losses that might occur from material adhering to the cap or sides of the tube.

Application information

Recommended dilution	3 µl (IP), 1 : 1000 (WB)
Expected apparent MW	37.7 38 kDa
Confirmed reactivity	<i>Arabidopsis thaliana</i>
Not reactive in	No confirmed exceptions from predicted reactivity are currently known
Additional information	MKKK18 is not stable in endogenous extracts and to allow successful detection use transgenic plants or transient expression in protoplasts
Selected references	Tajdel-Zielińska et al. (2023). Arabidopsis HECT and RING-type E3 Ligase Promote MAPKKK18 Degradation To Regulate Abscisic Acid Signalling. <i>Plant Cell Physiol.</i> 2023 Dec 28;pcad165.doi: 10.1093/pcp/pcad165. Mitula et al. (2015). Arabidopsis ABA-Activated Kinase MAPKKK18 is Regulated by Protein Phosphatase 2C ABI1 and the Ubiquitin-Proteasome Pathway. <i>Plant Cell Physiol.</i> 2015 Dec;56(12):2351-67. doi: 10.1093/pcp/pcv146. Epub 2015 Oct 6.

Application example

Various samples from *Arabidopsis thaliana* cells overexpressing MKK18 were separated on 12% SDS-PAGE and blotted 1h to PVDF (semi-dry). Blots were blocked with 3% semi-skimmed milk for 30 min. at room temperature (RT) with agitation. Blot was incubated with the primary antibody diluted to 1: 1000 for 30 minutes at RT with agitation. The antibody solution was decanted and the blot was rinsed briefly twice, then washed 3 times for 5 min in TBS-T at RT with agitation. Blot was incubated in secondary antibody (anti-rabbit IgG horse radish peroxidase conjugated, from Agrisera, [AS09 602](#)) diluted to 1:50 000 in for 30min. at RT with agitation. The blot was washed as above and developed for 1 min with ECL according to the manufacturer's instructions. Exposure time was 5 min.

Courtesy of Malgorzata Tajdel, Ludwików Lab, Adam Mickiewicz University, Poland