

Agrisera

This product is for research use only (not for diagnostic or therapeutic use)

contact: support@agrisera.com

Agrisera AB | Box 57 | SE-91121 Vännäs | Sweden | +46 (0)935 33 000 | www.agrisera.com

Product no **AS07 242**

GOGAT | Glutamine oxoglutarate aminotransferase

Product information

Immunogen	KLH-conjugated synthetic peptide well conserved in known GOGAT sequences from different species including <i>Arabidopsis thaliana</i> Fd-GOGAT 1 Q9ZNZ7 , At5g04140 and Fd-GOGAT 2 Q9T0P4 , At2g41220
Host	Rabbit
Clonality	Polyclonal
Purity	Serum
Format	Lyophilized
Quantity	50 µl
Reconstitution	For reconstitution add 50 µl of sterile water.
Storage	Store lyophilized/reconstituted at -20 °C; once reconstituted make aliquots to avoid repeated freeze-thaw cycles. Please, remember to spin tubes briefly prior to opening them to avoid any losses that might occur from lyophilized material adhering to the cap or sides of the tubes.

Application information

Recommended dilution	1 : 1000 (WB)
Expected apparent MW	177 170-180 kDa depending upon the species
Confirmed reactivity	<i>Arabidopsis thaliana</i> , <i>Miscanthus giganteus</i> , <i>Nicotiana tabacum</i> , <i>Oryza sativa</i> , <i>Phaseolus vulgaris</i> , <i>Populus tremula</i> , <i>Solanum lycopersicum</i> , <i>Spartina sp.</i> , <i>Zea mays</i>
Predicted reactivity	<i>Arthrospira platensis</i> PCC 7345, <i>Beta vulgaris</i> , <i>Brachypodium distachyon</i> , <i>Burkholderia glumae</i> , <i>Camellia sinensis</i> , <i>Chloroflexi bacterium</i> , <i>Chlamydomonas reinhardtii</i> , <i>Gracilaria tenuistipitata</i> , <i>Cyanobacteria</i> , <i>Crocospaera watsonii</i> WH 8502, <i>Cyanidioschyzon merolae</i> (strain 10D), <i>Galdieria sulphuraria</i> , <i>Glycine max</i> , <i>Helicosporidium sp.</i> ATCC 50920, <i>Hydrogenobaculum sp. HO</i> , <i>Lactococcus lactis subsp. lactis</i> bv. <i>diacetylactis</i> str. TIFN2, <i>Leptospira interrogans serovar Bataviae</i> str. HAI135, <i>Leptolyngbya boryana</i> , <i>Medicago truncatula</i> , <i>Microcystis panniformis</i> , <i>Monoraphidium neglectum</i> , <i>Morus notabilis</i> , <i>Nannochloropsis gaditana</i> , <i>Nicotiana tabacum</i> , <i>Ostreococcus lucimarinus</i> , <i>Physcomitrella patens subsp. patens</i> , <i>Porphyra purpurea</i> , <i>Sutterella wadsworthensis</i> , <i>Sulfurihydrogenibium yellowstonense</i> , <i>Veillonella atypica</i> Species of your interest not listed? Contact us
Not reactive in	No confirmed exceptions from predicted reactivity are currently known.
Additional information	This antibody can be used as a plastidial marker for leaf material, not roots where levels of GOGAT are too low. A 40 kDa band present in <i>A. thaliana</i> sample is not competed away during antibody neutralization assay. In this assay free peptide used for antibody production is incubated together with anti-GOGAT antibodies. Due to the MW of this protein we suggest to use a gradient gel for protein separation and a longer transfer time. For high resolution images, please visit the specific product page at www.agrisera.com
Selected references	Touraine et al. (2019). Iron-sulfur protein NFU2 is required for branched-chain amino acid synthesis in Arabidopsis roots. <i>J Exp Bot.</i> 2019 Mar 27;70(6):1875-1889. doi: 10.1093/jxb/erz050. Wang et al. (2018). Genetic variations in ARE1 mediate grain yield by modulating nitrogen utilization in rice. <i>Nat Commun.</i> 2018 Feb 21;9(1):735. doi: 10.1038/s41467-017-02781-w. Nath et al. (2016). A Nitrogen-Fixing Subunit Essential for Accumulating 4Fe-4S-Containing Photosystem I Core Proteins. <i>Plant Physiol.</i> 2016 Dec;172(4):2459-2470. Epub 2016 Oct 26. Jayawardena et al. (2016). Elevated CO2 plus chronic warming reduces nitrogen uptake and levels or activities of nitrogen -uptake and -assimilatory proteins in tomato roots. <i>Physiol Plant.</i> 2016 Nov 28. doi: 10.1111/ppl.12532. [Epub ahead of print]

Agrisera

This product is **for research use only** (not for diagnostic or therapeutic use)

contact: support@agrisera.com

Agrisera AB | Box 57 | SE-91121 Vännäs | Sweden | +46 (0)935 33 000 | www.agrisera.com

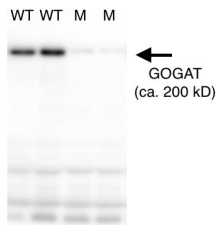
[Takabayashi et al. \(2016\)](#) Direct interaction with ACR11 is necessary for post-transcriptional control of GLU1-encoded ferredoxin-dependent glutamate synthase in leaves. *Sci Rep.* 2016 Jul 14;6:29668. doi: 10.1038/srep29668.

[Yang et al. \(2016\)](#). Rice Ferredoxin-Dependent Glutamate Synthase Regulates Nitrogen-Carbon Metabolomes and Is Genetically Differentiated between japonica and indica Subspecies. *Mol Plant.* 2016 Sep 24. pii: S1674-2052(16)30195-2. doi: 10.1016/j.molp.2016.09.004.

[Moscatelli et al. \(2015\)](#). Characterisation of detergent-insoluble membranes in pollen tubes of *Nicotiana tabacum* (L.). *Biol Open.* 2015 Feb 20. pii: BIO201410249. doi: 10.1242/bio.201410249.

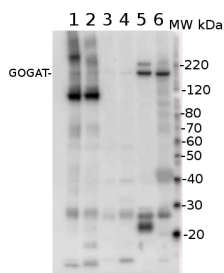
[Podgórska et al. \(2013\)](#). Long-term ammonium nutrition of *Arabidopsis* increases the extrachloroplastic NAD(P)H/NAD(P)⁺ ratio and mitochondrial reactive oxygen species level in leaves but does not impair photosynthetic capacity. *Plant Cell Environ.* April 10.

Application example



Approximately 40 µg of total protein from *Arabidopsis thaliana* wild-type (WT) and *gls1-103* mutant (M) leaves, the latter of which showed reduced GOGAT levels, was extracted with a protein extraction solution containing 50 mM Imidazole/HCl (pH 7.0 at 4°C), 20% glycerol, 5mM 6-aminocaproic acid, 1mM EDTA. Protein extracts were then separated on 6% SDS-PAGE and blotted overnight at 4°C to PVDF using the tank transfer method. Blots were blocked with PBS-T containing 5% skim milk for 1h at room temperature (RT) with agitation. Blot was incubated in the primary antibody at a dilution of 1: 20 000 in PBS-T containing 1% (w/v) BSA for 1h at RT with agitation. The antibody solution was decanted and the blot was rinsed briefly twice, then washed once for 15 min and 3 times for 5 min in PBS-T at RT with agitation. Blot was incubated in secondary antibody (anti-rabbit IgG horse radish peroxidase conjugated) diluted to 1:20 000 in PBS-T containing 1% (w/v) BSA for 1h at RT with agitation. The blot was washed as above and developed for 1 min with chemiluminescent detection reagent, according to the manufacturer's instructions. Exposure time was 5 min.

Courtesy Dr. Atsushi Takabayashi, Institute of Low Temperature Science, Hokkaido University, Japan



20 µg of total protein cell extract extracted with **Protein Extraction Buffer, PEB (AS08 300)** from leaves of (1) *Spartina patens* (2) *Spartina alterniflora* l, (3) *Miscanthus giganteus*, (4) *Zea mays*, (5) *Phaseolus vulgaris*, (6) *Arabidopsis thaliana* were separated on **4-12% NuPage (Invitrogen) LDS-PAGE** and blotted 1h to **PVDF**. Blots were blocked immediately following transfer in 2% blocking reagent in 20 mM Tris, 137 mM sodium chloride pH 7.6 with 0.1% (v/v) Tween-20 (TBS-T) for 1h at room temperature with agitation. Blots were incubated in the primary antibody at a dilution of 1: 10 000 for 1h at room temperature with agitation. The antibody solution was decanted and the blot was rinsed briefly twice, then washed once for 15 min and 3 times for 5 min in TBS-T at room temperature with agitation. Blots were incubated in secondary antibody (anti-rabbit IgG horse radish peroxidase conjugated) diluted to 1:50 000 in 2% blocking solution for 1h at room temperature with agitation. The blots were washed as above and developed for 5 min with chemiluminescent detection reagent according the manufacturers instructions. Images of the blots were obtained using a CCD imager (FluorSMax, Bio-Rad) and Quantity One software (Bio-Rad).