

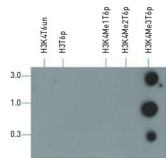
Agrisera

This product is **for research use only** (not for diagnostic or therapeutic use)

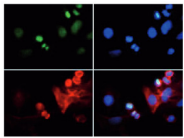
contact: support@agrisera.com

Agrisera AB | Box 57 | SE-91121 Vännäs | Sweden | +46 (0)935 33 000 | www.agrisera.com

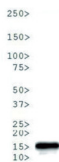
Chromatin Immunoprecipitation using anti-H3K4me3T6p antibodies. Chromatin from one million formaldehyde cross-linked HeLa cells was used with 2 µg of H3K4me3T6p antibody alongside a no antibody (No Ab) control, DNA was measured by qPCR and normalized to total input.



Dot Blot using anti-H3K4me3T6p antibodies. Lane 1: Unmodified. Lane 2: T6p. Lane 3: K4Me1T6p. Lane 4: K4Me2T6p. Lane 5: K4Me3T6p. Load: 3, 1, and 0.3 picomoles of peptide. Primary antibody used at a 1:1 000 dilution for 45 min at 4°C. Secondary antibody: Dylight®488 rabbit secondary antibody at 1:10 000 for 45 min at RT.



Immunofluorescence using anti-H3K4me3T6p antibodies. Tissue: HeLa cells. Fixation: 0.5% PFA. Primary antibody used at a 1:50 dilution for 1 h at RT. Secondary antibody: FITC secondary antibody at 1:10 000 for 45 min at RT. Localization: Histone H3K4me3T6p is nuclear and chromosomal. Staining: H3K4me3T6p is expressed in green and the nuclei and alpha-tubulin are counterstained with DAPI (blue) and Dylight® 594 (red).



Western Blot using anti-H3K4me3T6p antibodies. 30 µg *C. elegans* embryo lysate. Primary antibody at 1:500 overnight at 4°C. Secondary antibody: IRDye800™ rabbit secondary antibody at 1:10 000 for 45 min at RT.