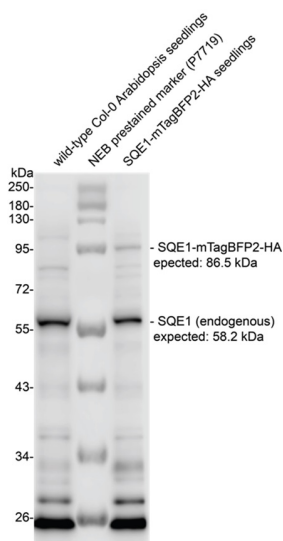


Product no **AS22 4821****Anti-SQS1 | Squalene synthase****Product information**

<b>Immunogen</b>	KLH-conjugated peptide derived from <i>Arabidopsis thaliana</i> SQS1, UniProt: <a href="#">P53799</a> , TAIR: At4g34640
<b>Host</b>	Rabbit
<b>Clonality</b>	Polyclonal
<b>Purity</b>	Antigen affinity purified serum, in PBS pH 7.4
<b>Format</b>	Lyophilized
<b>Quantity</b>	50 µg
<b>Reconstitution</b>	For reconstitution, add 50 µl of sterile or deionized water.
<b>Storage</b>	Store lyophilized/reconstituted at -20°C; once reconstituted make aliquots to avoid repeated freeze-thaw cycles. Please, remember to spin tubes briefly prior to opening them to avoid any losses that might occur from lyophilized material adhering to the cap or sides of the tubes.

**Application information**

<b>Recommended dilution</b>	1 : 500 - 1000 (WB)
<b>Expected   apparent MW</b>	47   58.2 kDa
<b>Confirmed reactivity</b>	<i>Arabidopsis thaliana</i>
<b>Predicted reactivity</b>	<i>Brassica napus</i> , <i>Brachypodium distachyon</i> , <i>Camelina sativa</i> , <i>Capsella rubella</i> , <i>Hordeum vulgare</i> , <i>Lepidium apetalum</i> , <i>Lolium rigidum</i> , <i>Prunus dulcis</i> , <i>Oryza sativa</i> , <i>Raphanus sativus</i> , <i>Zea mays</i> Species of your interest not listed? <a href="#">Contact us</a>
<b>Not reactive in</b>	No confirmed exceptions from predicted reactivity are currently known
<b>Selected references</b>	To be added when available, antibody available in January 2026.



60 µL of tissue extracted freshly from *Arabidopsis thaliana* seedlings was ground with a pestle and three volumes of sample buffer [(500 mM Tris pH 8.0, 4% (w/v) lithium dodecyl sulfate, 1 mM EDTA, 20% (w/v) glycerol, 11 µM Coomassie blue G250, 16.6 µM phenol red, 50 µM dithiothreitol (DTT)] was added. Proteins were denatured by boiling the samples at 100°C for 5 min. Samples were separated at room temperature on 10% SDS-PAGE (Bolt Bis-Tris gels) and transferred (wet) for 15 minutes to nitrocellulose (pore size 0.45 µm), using an eBlot L1 transfer system (GenScript). Blot was blocked with 5% BSA for 1 h at room temp with rocking. Blot was incubated in the primary antibody at a dilution of 1:500 overnight at 4°C with rocking. The antibody solution was decanted, and the blot was rinsed briefly, then washed 3 times for 5 min in TBS-T at room temp with rocking. Blot was incubated in matching secondary antibody (anti-rabbit IgG horse radish peroxidase conjugated) diluted to 1:2500 in 5% BSA for 1 hour at room temp with rocking. The blot was washed as above and developed with WesternSure Premium Chemiluminescent substrate (Thermo Fisher, 50-489-552) for 3 minutes. Exposure time was 3 minutes.



This product is **for research use only** (not for diagnostic or therapeutic use)

**contact: [support@agriser.com](mailto:support@agriser.com)**

Agriser AB | Box 57 | SE-91121 Vännäs | Sweden | +46 (0)935 33 000 | [www.agriser.com](http://www.agriser.com)

Courtesy of Dr. Bonnie Bartel, Rice University, USA