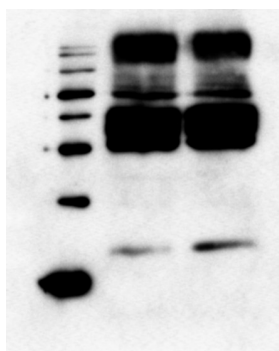


Product no **AS19 4303****LHCR4 | Protein fucoxanthin chlorophyll a/c protein****Product information**

<b>Immunogen</b>	KLH-conjugated peptide derived from <i>Phaeodactylum tricornutum</i> LHCR4, UniProt: <a href="#">B7FQE1</a>
<b>Host</b>	Rabbit
<b>Clonality</b>	Polyclonal
<b>Purity</b>	Immunogen affinity purified serum in PBS pH 7.4.
<b>Format</b>	Lyophilized
<b>Quantity</b>	50 µg
<b>Reconstitution</b>	For reconstitution add 50 µl, of sterile water
<b>Storage</b>	Store lyophilized/reconstituted at -20°C; once reconstituted make aliquots to avoid repeated freeze-thaw cycles. Please remember to spin the tubes briefly prior to opening them to avoid any losses that might occur from material adhering to the cap or sides of the tube.

**Application information**

<b>Recommended dilution</b>	1 : 1000 (WB)
<b>Expected   apparent MW</b>	23 kDa
<b>Confirmed reactivity</b>	<i>Phaeodactylum tricornutum</i>
<b>Predicted reactivity</b>	<i>Gambierdiscus australes</i> , <i>Madurella mycetomatis</i> Species of your interest not listed? <a href="#">Contact us</a>
<b>Not reactive in</b>	No confirmed exceptions from predicted reactivity are currently known



Samples: 1 - 25 µg of *Phaeodactylum tricornutum* whole cell extract from low light (35 µmol photons m<sup>-2</sup> s<sup>-1</sup>) acclimated WT cells 2 – 25 µg of *Phaeodactylum tricornutum* whole cell extract from low light (35 µmol photons m<sup>-2</sup> s<sup>-1</sup>) acclimated WT cells exposed to high light (1000 µmol photons m<sup>-2</sup> s<sup>-1</sup>) for 1 hour.

Total protein was extracted from *P. tricornutum* cell pellets that had been flash-frozen in liquid nitrogen and stored in -80 °C with a buffer containing 2% SDS, 6M Urea and 50 mM Tris, pH 6.8. A five mm pre-cooled (-80 °C) stainless steel bead (QIAGEN) were added to each of the tubes with frozen cell pellets, and the cells were mechanically broken and homogenized in two steps using the TissueLyser system (QIAGEN). The samples were first placed in a pre-cooled (-80 °C) adapter set followed by cell disruption for 2 min at 25 Hz. Before the second shaking step (8 min at 25 Hz), the samples were transferred to a room temperature adapter set and 700 µl lysis buffer (2% SDS, 6M Urea and 50 mM Tris, pH 6.8) were added. Insoluble material was removed by centrifugation (100 G) for 30 min at 4 °C following the protocol from Juhas et al. (2014). The lysate was stored at -80 °C. 25 µg of WT samples were loaded on the gel. A loading dye containing DTT, SDS, glycin, Tris (pH 6.8) and BPB was added to the samples and the samples were heated at 40 °C for 10 min. Proteins were separated on 12 % SDS-PAGE and blotted 1h at 100V to nitrocellulose (pore size of 0.2 µm), using wet transfer. Blot was blocked with 5 % milk for 1h/RT with agitation. Blot was incubated in the primary antibody at a dilution of 1: 1 000 ON/4 °C with agitation in 5% milk in PBS-T. The antibody solution was decanted, and the blot was washed 4 times for 5 min in PBS-T at RT with agitation. Blot was incubated in goat anti-Rabbit IgG secondary antibody conjugated to HRP (Agrisera, [AS09 6021](#)) diluted to 1:25 000 in 5% milk in PBS-T for 2h/RT with agitation. The blot was washed as above before adding [AgriseraECL SuperBright](#) chemiluminescent substrate with extreme low femtogram detection range, to the blot. 10 minutes after adding the chemiluminescent substrate, a G:BOX ChemiXRQ gel doc system (Syngene) was used to take pictures of the blots. The exposure time was automatically estimated by the G:BOX software to around 2 minutes. LHCR4 antibody is producing a band of correct size can be seen at maximum contrast for the WT sample in

addition to the unspecific bands.

Courtesy of Dr. Marianne Nymark, Institute of Biology, NTNU, Trondheim, Norway