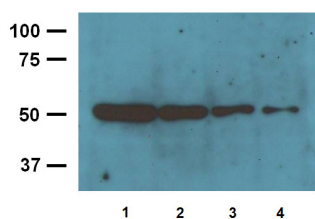


Product no **AS20 4382****Anti-Beta-tubulin, (loading control antibody), mouse monoclonal****Product information**

Immunogen	Synthetic peptide derived from the N-terminal of the human beta-tubulin
Host	Mouse
Clonality	Monoclonal
Subclass/isotype	IgG2a
Purity	IgG2a purified on Protein A n 10mM PBS, pH 7.2, with 1% BSA and 0.05% sodium azide.
Format	Lyophilized
Quantity	100 µg
Storage	Store at -20 °C for 3 years or more, Reconstitute with distilled water to desired concentration before use, Aliquot to avoid repeated freeze-thaw cycles, Store aliquots at 4 °C for several days to weeks
Additional information	10mM PBS, pH 7,2, with 1% BSA and 0,05% sodium azide

Application information

Recommended dilution	1: 2000 - 1: 5000 (WB), for other techniques end user needs to determine most optimal dilution
Expected apparent MW	50 kDa
Confirmed reactivity	Chicken, human, monkey, mouse, rat, rabbit
Not reactive in	No confirmed exceptions from predicted reactivity are currently known
Additional information	This antibody recognizes both the native and denatured forms of Beta-tubulin

Application example

Varied amounts of mouse brain tissue lysate: 10 µg/lane **(1)**, 5 µg/lane **(2)**, 2.5/lane µg **(3)**, 1.25 µg/lane **(4)** were extracted and separated on SDS-PAGE and blotted to a membrane. Primary antibodies were used at a dilution of 1: 4000 (0.25 µg/ml). Reaction was developed by chemiluminescence.