

# Agrisera

This product is for research use only (not for diagnostic or therapeutic use)

contact: [support@agrisera.com](mailto:support@agrisera.com)

Agrisera AB | Box 57 | SE-91121 Vännäs | Sweden | +46 (0)935 33 000 | [www.agrisera.com](http://www.agrisera.com)

Product no **AS20 4485**

**BFP, GFP, YFP | Fluorescence Protein, clone 3A6**

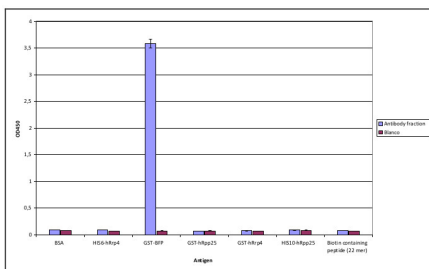
## Product information

<b>Immunogen</b>	Recombinant EBFP (NCBI accession number AX_766758 REGION: 1-717, expression vector pGEX-1N), expressed in <i>E.coli</i> .
<b>Host</b>	Mouse
<b>Clonality</b>	Monoclonal
<b>Subclass/isotype</b>	IgG1
<b>Purity</b>	Purified on Protein A
<b>Format</b>	Lyophilized in a 10 mM ammonium bicarbonate buffer. Each vial contains 2 mg of BSA.
<b>Quantity</b>	100 µg
<b>Reconstitution</b>	Recommended antibody concentration: 0.5 mg/ml (when dissolved at 0.5 mg/ml, the BSA concentration will be 1%). Recommended solvent; 100 mM PBS or Tris-HCl, pH 7.0 • Additional sodium azide ( up to 0.05%) is recommended for long term storage. • For a 0.5 mg/ml antibody concentration in 1% BSA, dissolve in 200 µl buffer.
<b>Storage</b>	Store lyophilized/reconstituted at 2-8 °C; once reconstituted make aliquots to avoid repeated freeze-thaw cycles. Please, remember to spin tubes briefly prior to opening them to avoid any losses that might occur from lyophilized material adhering to the cap or sides of the tubes.

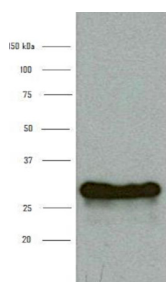
## Application information

**Recommended dilution** | 1 : 150-1: 3000 (ELISA), 1 : 500-1 : 5000 (WB)

**Confirmed reactivity** | BFP, GFP, YFP



Specificity of Anti-Fluorescent Protein Immunoglobulin, clone 3A6, determined by ELISA. Antibody fraction (0.5 mg/ml) 1600X diluted in PBS containing 0,05% tween-20 and 5% non fat dry milk. Antibody was tested on various recombinant protein substrates i.e. BSA, 98% (Sigma), HIS6-hRrp4 (pET15b), GST-hRpp25 (pGEX-2T), GST-hRrp4 (pGEX-2T), HIS10-hRpp25 (pET16b), and a biotin containing peptide (22 mer).



# Agrisera

This product is **for research use only** (not for diagnostic or therapeutic use)

contact: [support@agrisera.com](mailto:support@agrisera.com)

Agrisera AB | Box 57 | SE-91121 Vännäs | Sweden | +46 (0)935 33 000 | [www.agrisera.com](http://www.agrisera.com)

1  $\mu$ l of a total cell extract from *E.coli*, containing recombinant EGFP (predicted band size 27 kDa) was separated on SDS PAGE and blotted to nitrocellulose membrane. Primary antibody (0.5 mg/ml) was used at a dilution of 1: 1000 in PBS-T (0,05% tween-20) and 5% non fat dry milk. As secondary antibody anti-mouse IgG1 HRP conjugated was used and reaction was visualised with chemiluminescence, following manufacture's recommendations.