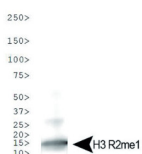


Product no **AS16 3167****Anti-H3R2me1 | Histone H3 (monomethylated Arg2)****Product information**

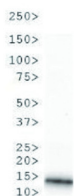
<b>Immunogen</b>	KLH-conjugated synthetic peptide which surrounds the R2me1
<b>Host</b>	Rabbit
<b>Clonality</b>	Polyclonal
<b>Purity</b>	Immunogen affinity purified serum.
<b>Format</b>	Liquid
<b>Quantity</b>	50 µg
<b>Storage</b>	Store lyophilized/reconstituted at -20°C; once reconstituted make aliquots to avoid repeated freeze-thaw cycles. Please remember to spin the tubes briefly prior to opening them to avoid any losses that might occur from material adhering to the cap or sides of the tube.
<b>Additional information</b>	This antibody preparation is provided in 20 mM Potassium Phosphate pH 7,2, 150 mM NaCl, 0,01% sodium azide and 30% glycerol

**Application information**

<b>Recommended dilution</b>	1 : 500 (WB)
<b>Expected   apparent MW</b>	15 kDa
<b>Confirmed reactivity</b>	Caenorhabditis elegans, Human
<b>Predicted reactivity</b>	<i>Drosophila melanogaster</i> , Mouse, Plant, Rat, <i>Xenopus sp.</i>
<b>Not reactive in</b>	No confirmed exceptions from predicted reactivity are currently known

**application example**

Western blot of H3R2me1 antibody. 30 µg of HeLa histone extracts. Primary antibody used at a 1:500 dilution overnight at 4°C. Secondary antibody: IRDye800™ rabbit secondary antibody at 1:10 000 for 45 min at RT.



Western blot of H3R2me1 antibody. 30 µg of *C. elegans* embryo lysate. Primary antibody used at a 1:500 dilution overnight at 4°C. Secondary antibody: IRDye800™ rabbit secondary antibody at 1:10 000 for 45 min at RT.