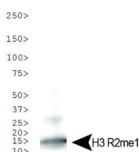


Product no **AS16 3167****Anti-H3R2me1 | Histone H3 (monomethylated Arg2)****Product information**

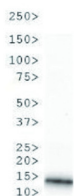
Immunogen	KLH-conjugated synthetic peptide which surrounds the R2me1
Host	Rabbit
Clonality	Polyclonal
Purity	Immunogen affinity purified serum.
Format	Liquid
Quantity	50 µg
Storage	Store lyophilized/reconstituted at -20°C; once reconstituted make aliquots to avoid repeated freeze-thaw cycles. Please remember to spin the tubes briefly prior to opening them to avoid any losses that might occur from material adhering to the cap or sides of the tube.
Additional information	This antibody preparation is provided in 20 mM Potassium Phosphate pH 7,2, 150 mM NaCl, 0,01% sodium azide and 30% glycerol

Application information

Recommended dilution	1 : 500 (WB)
Expected apparent MW	15 kDa
Confirmed reactivity	Caenorhabditis elegans, Human
Predicted reactivity	<i>Drosophila melanogaster</i> , Mouse, Plant, Rat, <i>Xenopus sp.</i>
Not reactive in	No confirmed exceptions from predicted reactivity are currently known

application example

Western blot of H3R2me1 antibody. 30 µg of HeLa histone extracts. Primary antibody used at a 1:500 dilution overnight at 4°C. Secondary antibody: IRDye800™ rabbit secondary antibody at 1:10 000 for 45 min at RT.



Western blot of H3R2me1 antibody. 30 µg of *C. elegans* embryo lysate. Primary antibody used at a 1:500 dilution overnight at 4°C. Secondary antibody: IRDye800™ rabbit secondary antibody at 1:10 000 for 45 min at RT.