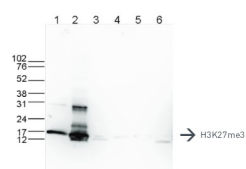


Product no **AS16 3193****Anti-H3K27me3 | Histone H3, trimethylated lysine 27 (H3K27me3)****Product information****Immunogen** | KLH-conjugated synthetic peptide**Host** | Rabbit**Clonality** | Polyclonal**Purity** | Immunogen affinity purified serum.**Format** | Liquid**Quantity** | 50 µg**Storage** | Store lyophilized/reconstituted at -20°C; once reconstituted make aliquots to avoid repeated freeze-thaw cycles. Please remember to spin the tubes briefly prior to opening them to avoid any losses that might occur from material adhering to the cap or sides of the tube.**Additional information** | Antibody is provided in PBS containing 0.05% azide and 0.05% ProClin 300**Application information****Recommended dilution** | 0.5-1 µg/IP (ChIP-seq), 1 : 20 000 (Dot), 1 : 1000 (ELISA), 1 : 500 (IF), 1 : 20 000 (PA), 1 : 1000 (WB)**Expected | apparent MW** | 15 kDa**Confirmed reactivity** | Human**Predicted reactivity** | *Arabidopsis thaliana*, *Caenorhabditis elegans*, Mouse, *Populus sp.*, *Solanum lycopersicum*, *Zea mays***Not reactive in** | No confirmed exceptions from predicted reactivity are currently known**Application example**

Western blot was performed on whole cell (25 µg, lane 1) and histone extracts (15 µg, lane 2) from HeLa cells, and on 1 µg of recombinant histone H2A, H2B, H3 and H4 (lane 3, 4, 5 and 6, respectively) using anti-H3K27me3 antibodies. The antibody was diluted 1:1 000 in TBS-Tween containing 5% skimmed milk.